

TECHNICAL MANUAL

ORGANIZATIONAL, DIRECT SUPPORT,  
AND GENERAL SUPPORT MAINTENANCE  
REPAIR PARTS AND SPECIAL TOOLS LIST  
(INCLUDING DEPOT MAINTENANCE  
REPAIR PARTS AND SPECIAL TOOLS)  
FOR

**V O L T M E T E R ,  
E L E C T R O N I C  
A N / U R M - 1 4 5  
( N S N 6 6 2 5 - 0 0 - 9 7 3 - 3 9 8 6 )**

---

HEADQUARTERS, DEPARTMENT OF THE ARMY

12 MAY 1977



TECHNICAL MANUAL }  
 No. 11-6625-524-24P-1 }

HEADQUARTERS  
 DEPARTMENT OF THE ARMY  
 WASHINGTON, DC, 12 May 1977

**ORGANIZATIONAL, DIRECT SUPPORT, AND GENERAL SUPPORT MAINTENANCE**

**REPAIR PARTS AND SPECIAL TOOLS LISTS**

**(INCLUDING DEPOT MAINTENANCE REPAIR PARTS AND SPECIAL TOOLS)**

F O R

VOLTMETER, ELECTRONIC AN/URM-145

(NSN 6625-00-973-3986)

*Current as of 1 February 1977*

**REPORTING OF ERRORS**

You can improve this manual by recommending improvements using DA Form 2028-2 (Test) located in the back of the manual. Simply tear out the self-addressed form, fill it out as shown on the sample, fold it where shown, and drop it in the mail.

If there are no blank DA Form 2028-2 (Test) in the back of your manual, use the standard DA Form 2028 (Recommended Changes to Publications and Blank Forms) and forward to the Commander, US Army Electronics Command, ATTN: DRSEL-MA-Q, Fort Monmouth, New Jersey 07703.

In either case a reply will be furnished direct to you.

**Table of Contents**

		Page	Illus Figure
SECTION	I. INTRODUCTION.....	1	
	II. REPAIR PARTS LIST.....	5	
Group	00 Voltmeter, Electronic AN/URM-145.....	5	1
	01 Voltmeter, Electronic ME-247/U or ME/247A/U.....	9	2-11
	02 Probe Subassembly MX-4528/U (No parts authorized)		
	03 Probe Subassembly MX-4529/U.....	27	12
	04 Lead, Teet MX-4527/J.....	29	13
SECTION	III. SPECIAL TOOLS LIST (Not applicable)		
	IV. NATIONAL STOCK NUMBER AND PART NUMBER INDEX	30	

\*This manual supercedes TM 11-6625-524-24P-1, 27 December 1974.



**SECTION I**

**INTRODUCTION**

**1. Scope**

This manual lists spares and repair parts, special tools; special test, measurement, and diagnostic equipment (TMDE), and other special support equipment required for performance of organizational, direct support, and general support maintenance of the AN/URM-145. It authorizes the requisitioning and issue of spares and repair parts as indicated by the source and maintenance codes.

**2. General**

This Repair Parts and Special Tools List is divided into the following sections

*a. Section II. Repair Parts List.* A list of spares and repair parts authorized for use in the performance of maintenance. The list also includes parts which must be removed for replacement of the authorized parts. Parts lists are composed of functional groups in numeric sequence, with the parts in each group listed in figure and item number sequence.

*b. Section III. Special Tools List.* Not applicable.

*c. Section IV. National Stock Number and Part Number Index.* A list, in National item identification number (NIIN) sequence, of all National stock numbers (NSN) appearing in the listings, followed by a list, in alphameric sequence, of all part numbers appearing in the listings. National stock numbers and part numbers are cross-referenced to each illustration figure and item number appearance.

**3. Explanation of Columns**

*a. Illustration.* This column is divided as follows:

(1) *Figure number.* Indicates the figure number of the illustration on which the item is shown.

(2) *Item number.* The number used to identify item called out in the illustration.

*b. Source, Maintenance, and Recoverability (SMR) Codes.*

(1) *Source code.* Source codes indicate the manner of acquiring support items for maintenance, repair, or overhaul of end items. Source codes are entered in the first and second positions of the Uniform SMR Code format as follows:

<i>Code</i>	<i>Definition</i>
PA	Item procured and stocked for anticipated or known usage.

<i>Code</i>	<i>Definition</i>
XD	A support item that is not stocked. When required, item will be procured through normal supply channels.

**NOTE**

Cannibalization or salvage may be used as a source of supply for any items source coded above except those coded XA and aircraft support items as restricted by AR 700-42.

(2) *Maintenance code.* Maintenance codes are assigned to indicate the levels of maintenance authorized to USE and REPAIR support items. The maintenance codes are entered in the third and fourth positions of the Uniform SMR Code format as follows

(a) The maintenance code entered in the third position will indicate the lowest maintenance level authorized to remove, replace, and use the support item. The maintenance code entered in the third position will indicate one of the following levels of maintenance:

<i>Code</i>	<i>Application/Explanation</i>
O	Support item is removed, replaced, used at the organizational level.
H	Support item is removed, replaced, used at the general support level.

(b) The maintenance code entered in the fourth position indicates whether the item is to be repaired and identifies the lowest maintenance level with the capability to perform complete repair (i.e., all authorized maintenance functions). This position will contain one of the following maintenance codes:

<i>Code</i>	<i>Application/Explanation</i>
H	The lowest maintenance level capable of complete repair of the support item is the general support level.
Z	Nonreparable. No repair is authorized.

(3) *Recoverability code.* Recoverability codes are assigned to support items to indicate the disposition action on unserviceable items. The recoverability code is entered in the fifth position of the Uniform SMR Code format as follows:

<i>Recoverability codes</i>	<i>Definition</i>
Z	Nonreparable item. When unserviceable, condemn and dispose at the level indicated in position 3.
H	Reparable item. When uneconomically

Recoverability  
codes

Definition

reparable, condemn and dispose at the general support level.

D – Reparable item. When beyond lower level repair capability, return to depot. Condemnation and disposal not authorized below depot level.

c. *National Stock Number.* Indicates the National stock number assigned to the item and will be used for requisitioning purposes.

d. *Part Number.* Indicate the primary number used by the manufacturer (individual, company, firm, corporation, or Government activity), which controls the design and characteristics of the item by means of its engineering drawings, specifications, standards, and inspection requirements to identify an item or range of items.

**NOTE**

When a stock numbered item is requisitioned, the repair part received may have a different part number than the part being replaced.

e. *Federal Supply Code for Manufacturer (FSCM).* The FSCM is a 5-digit numeric code listed in SB 708-42 which is used to identify the manufacturer, distributor, or Government agency, etc.

f. *Description.* Indicates the Federal item name and, if required, a minimum description to identify the item.

g. *Unit of Measure (U/M).* Indicates the standard of the basic quantity of the listed item as used in performing the actual maintenance function. This measure is expressed by a two character alphabetical abbreviation (e.g., ea, in, pr, etc). When the unit of measure differs from the unit of issue, the lowest unit of issue that will satisfy the required units of measure will be requisitioned.

h. *Quantity Incorporated in Unit.* Indicates the

quantity of the item used in the breakout shown on the illustration figure, which is prepared for a functional group, subfunctional group, or an assembly.

**4. Special Information**

The following publication pertains to the AN/URM-145 and its components:

TM 11-6625-524-15-1, Electronic Voltmeter AN/URM-145

**5. How to Locate Repair Parts**

a. When National stock number or part number is unknown.

(1) *First.* Using the table of contents, determine the functional group within which the item belongs. This is necessary since illustrations are prepared for functional groups and listings are divided into the same groups.

(2) *Second.* Find the illustration covering the functional group to which the item belongs.

(3) *Third.* Identify the item on the illustration and note the illustration figure and item number of the item.

(4) *Fourth.* Using the Repair Parts Listing, find the figure and item number noted on the illustration.

b. When National stock number or part number is known.

(1) *First.* Using the Index of National Stock Numbers and Part Numbers, find the pertinent National stock number or part number. This index is in NIIN sequence followed by a list of part numbers in alphameric sequence, cross-referenced to the illustration figure number and item number.

(2) *Second.* After finding the figure and item number, locate the figure and item number in the repair parts list.

**6. Abbreviations**

Not applicable.

(Next printed page is 5/(6 blank) )

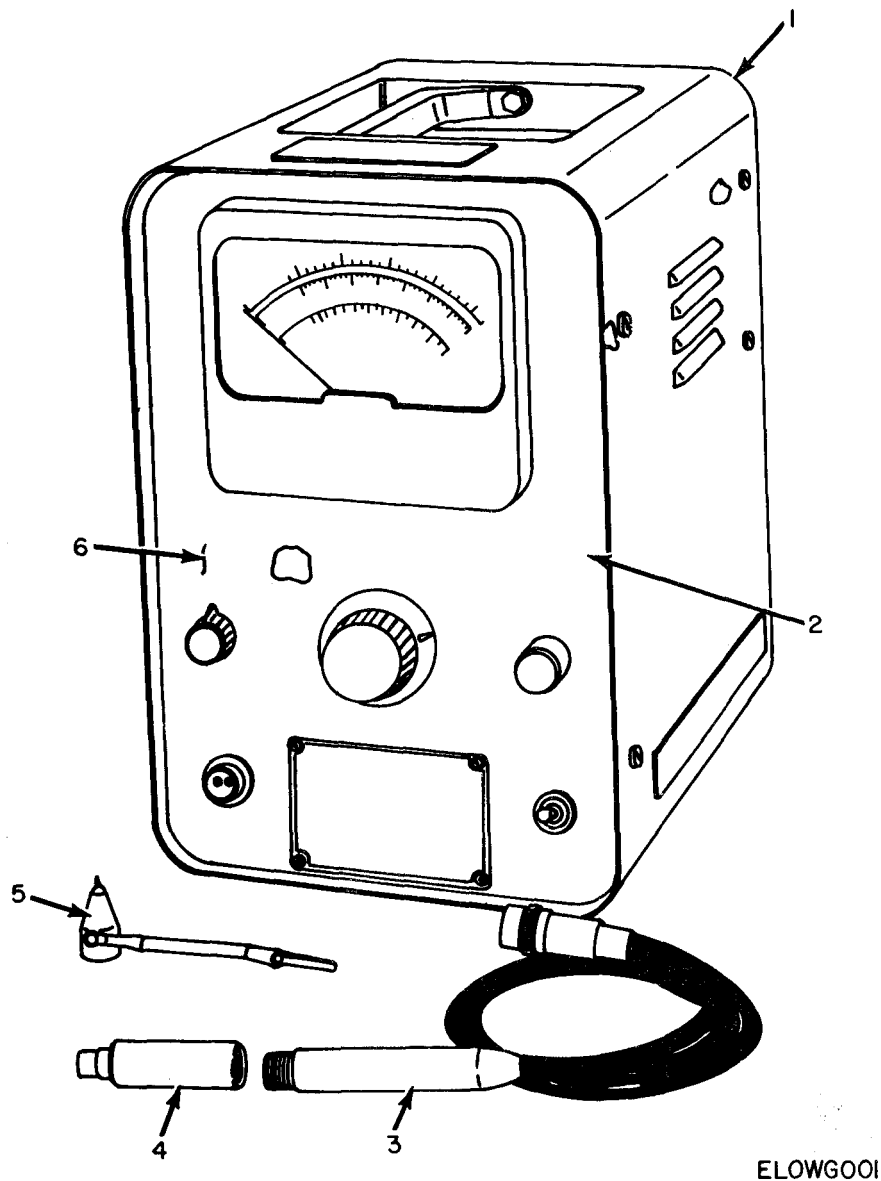


Figure 1. Voltmeter, Electronic AN/URM-145.

(1) ILLUSTRATION		(2)	(3)	(4)	(5)	(6)	(7)	(8)
(a) FIG NO.	(b) ITEM NO.	SMR CODE	NATIONAL STOCK NUMBER	PART NUMBER	FSCM	DESCRIPTION	USABLE ON CODE	QTY INC IN UNIT
						GROUP 00 VOLTMETER, ELECTRONIC AN/URM-145		
1	1	XDHHH		091315	04901	CASE ASSEMBLY, VOLTMETER		EA 1
1	2	XDHHH		091302	04901	PANEL ASSEMBLY		EA 1
1	3	PAOHH	6625-00-973-2297	MX4527/U	80058	LEAD, TEST		EA 1
1	4	PAOZZ	6625-00-973-2296	MX4528U	80058	PROBE SUBASSEMBLY		EA 1
1	5	PAOHH	6625-00-072-8637	MX4529/U	80058	PROBE SUBASSEMBLY		EA 1
1	6	PAHHH	6625-00-817-8908	ME-247A/U	80058	VOLTMETER, ELECTRONIC ME-247A/U OR		EA 1
1	6	XDHHH		ME-247/U	80058	VOLTMETER, ELECTRONIC ME-247/U		EA 1





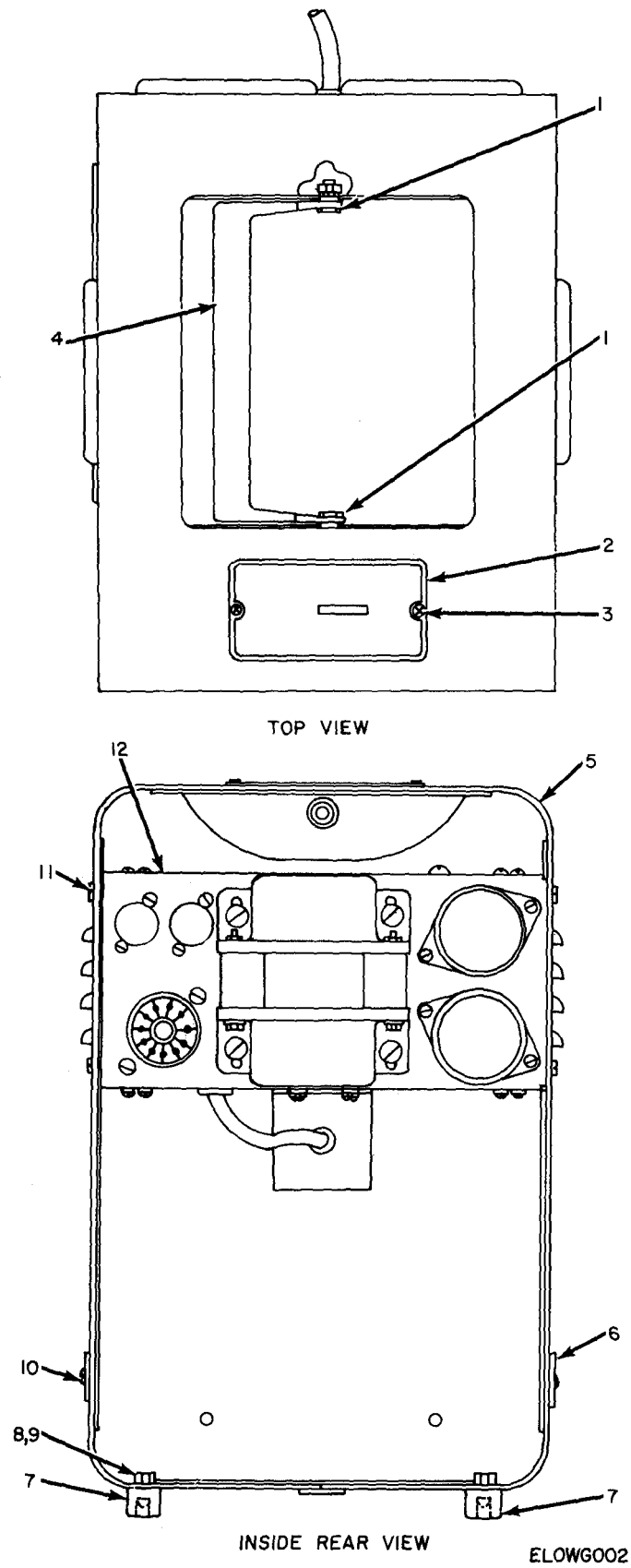
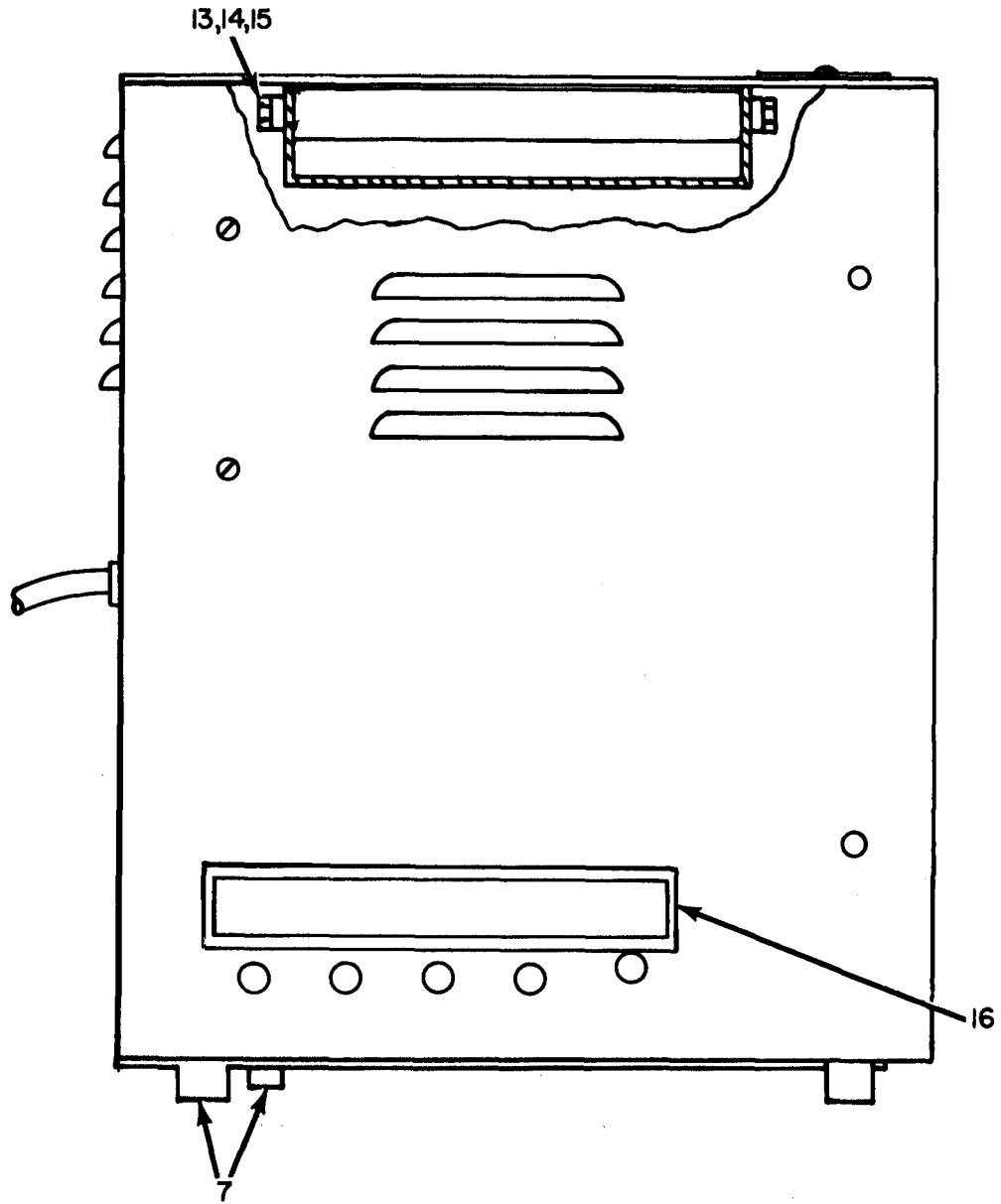


Figure 2. Voltmeter, Electronic ME-247/U or ME-247A/U, Case Assembly (Sheet 1 of 2).



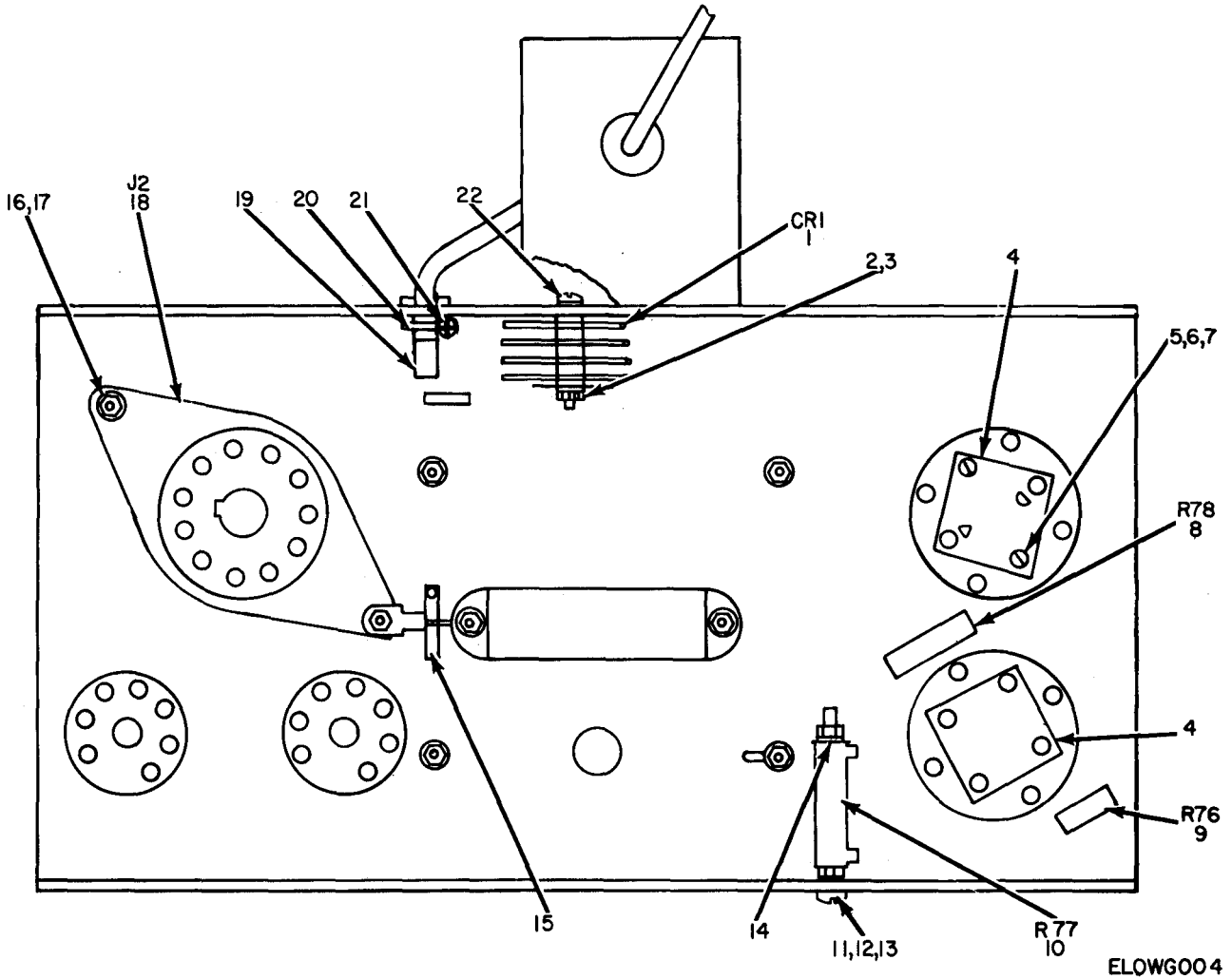
RIGHT SIDE VIEW

ELOWG003

Figure 2. Voltmeter, Electronic ME-247/U or ME-247A/U, Case Assembly (Sheet 2 of 2).

SECTION II

(1)	(2)	(3)	(4)	(5)	(6)	(7)	(8)
ILLUSTRATION							
(A)	(B)						QTY
FIG	ITEM	SMR	NATIONAL STOCK	PART	DESCRIPTION		INC
NO.	NO.	CODE	NUMBER	NUMBER	FSCM	USABLE ON CODE	IN
							UNIT
GROUP 01 VOLTMETER, ELECTRONIC ME-247/U OR							
ME-247A/U							
2	1	XDHZZ		750181	04901		EA 2
2	2	XDHZZ		780133	04901		EA 1
2	3	XDHZZ		793143	04901		EA 6
2	4	XDHZZ		796111	04901		EA 1
2	5	XDHZZ		600220	04901		EA 1
2	6	XDHZZ		780126	04901		EA 1
2	7	PAHZZ	5340-00-062-6115	1334	70485		EA 4
2	8	XDHZZ		SCRBHBR6-32X9-16	04901		EA 2
2	9	XDHZZ		745174	04901		EA 4
2	10	XDHZZ		SCRBHBR6-32X1-2	04901		EA 2
2	11	XDHZZ		SCRBHST6-32X3-8	04901		EA 4
2	12	XDHHD		091316	04901		EA 4
2	13	XDHZZ		840163	04901		EA 2
2	14	XDHZZ		NUTBR8-32X3-8	04901		EA 2
2	15	PAHZZ	5310-00-579-0150	1910-00	78189		EA 2
2	16	XDHZZ		780130	04901		EA 1



ELWGO04

Figure 3. Voltmeter, Electronic ME-247/U or ME-247A/U, Power Supply, Bottom View.

SECTION II								(7)	(8)
(1)	(2)	(3)	(4)	(5)	(6)			(7)	(8)
ILLUSTRATION									
(A)	(B)								
FIG	ITEM	SMR	NATIONAL	PART	DESCRIPTION				QTY
NO.	NO.	CODE	STOCK	NUMBER		FSCM	USABLE ON CODE	U/M	INC
			NUMBER						IN
3	1	PAHZZ	6130-00-583-9090	3048B	RECTIFIER, METALLIC	84970		EA	1
3	2	XDHZZ		NUTBR6-32X1-4	NUT, PLAIN, HEXAGON	04911		EA	4
3	3	PAHZZ	5310-00-568-7971	1806-00	WASHER, LOCK	78189		EA	1
3	4	XDHZZ	5910-00-840-2403	BP6	PLATE, MOUNTING, POWER SUPPLY	37942		EA	2
3	5	XDHZZ		SCRBHBR4-40X1-4	SCREW, MACHINE	04901		EA	2
3	6	XDHZZ		190400	WASHER, LOCK	78189		EA	2
3	7	XDHZZ		NUTBR4-40X1-4	NUT, PLAIN, HEXAGON	04901		EA	4
3	8	PAHZZ	5905-00-249-4190	RC42GF562J	RESISTOR, FIXED, COMPOSITION	81349		EA	1
3	9	PAHZZ	5905-00-279-2617	RC32GF105J	RESISTOR, FIXED, COMPOSITION	81349		EA	1
3	10	PAHZZ	5905-00-929-4911	10W10315PCT	RESISTOR, FIXED, WIRE WOUND	02642		EA	1
3	11	PAHZZ	5310-00-634-9784	2163	WASHER, NONMETALLIC	83330		EA	2
3	12	XDHZZ		NUTBR8-32X5-16	NUT, PLAIN, HEXAGON	04901		EA	2
3	13	XDHZZ		SCRBH8-32-21-4	SCREW, MACHINE	04901		EA	1
3	14	PAHZZ	5310-00-019-0670	1908-00	WASHER, LOCK	78189		EA	2
3	15	PAHZZ	5940-00-171-0419	1513A	TERMINAL BOARD	71785		EA	1
3	16	XDHZZ		SCRHBR6-32X1-4	SCREW, MACHINE	04901		EA	2
3	17	PAHZZ	5310-00-754-4399	1906-00	WASHER, LOCK	78189		EA	4
3	18	PAHZZ	5935-00-975-3150	77M1P11	SOCKET, ELECTRON TUBE	02660		EA	1
3	19	XDHZZ		CE9	INSULATION SLEEVING, ELECTRICAL	37942		EA	1
3	20	XDHZZ		1953-6B	CAMP, LOOP	71616		EA	1
3	21	XDHZZ		SCRBHBR6-32X5-16	SCREW, MACHINE	04901		EA	1
3	22	XDHZZ		SCRBHBR6-32X7-8	SCREW, MACHINE	04901		EA	1

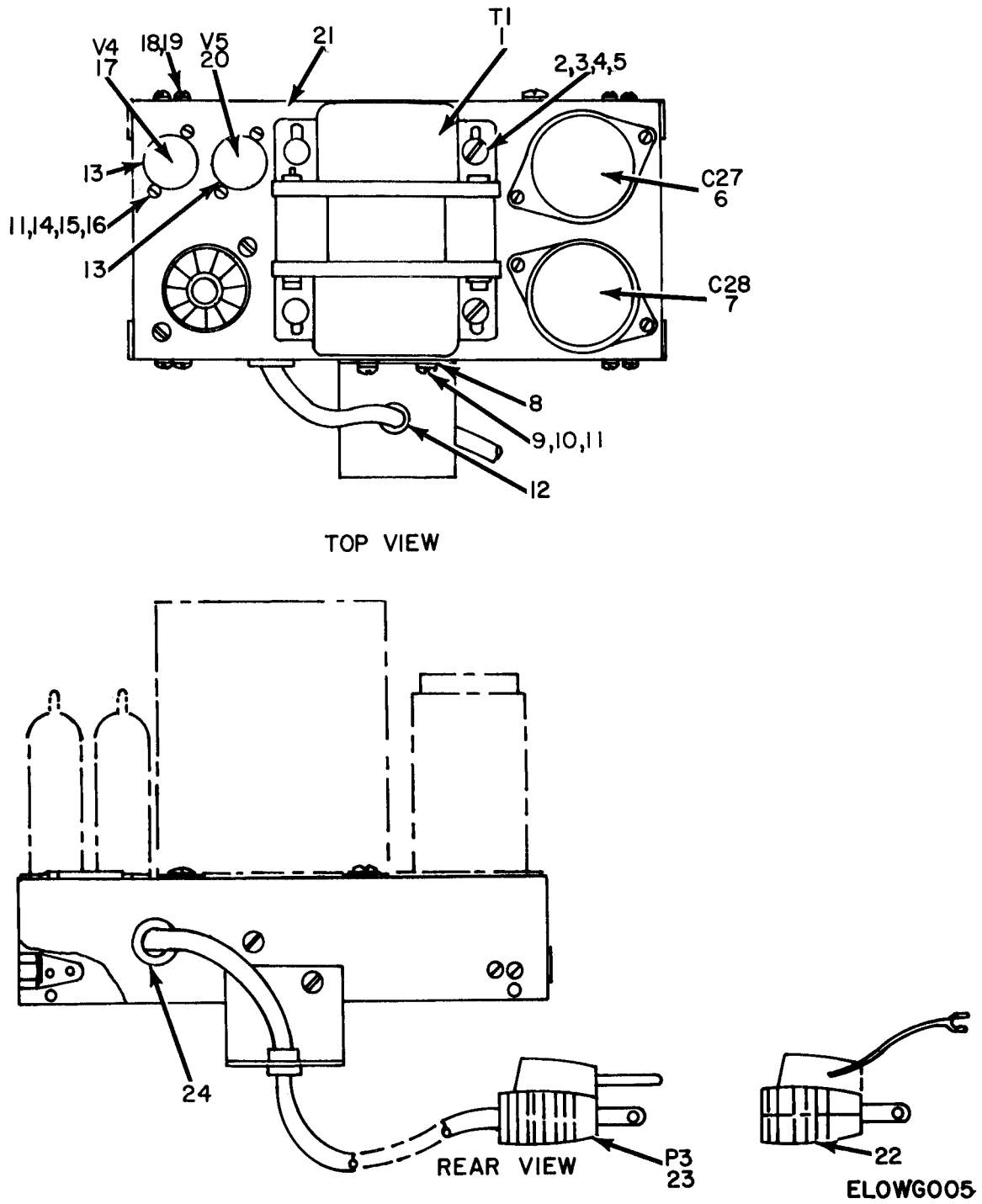


Figure 4. Voltmeter, Electronic ME-247/U or ME-247A/U, Power Supply.

SECTION II		(2)	(3)	(4)	(5)	(6)	(7)	(8)
(1)	ILLUSTRATION							
(A)	(B)		NATIONAL	PART		DESCRIPTION		QTY
FIG	ITEM	SMR	STOCK	NUMBER	FSCM		USABLE ON CODE	INC
NO.	NO.	CODE	NUMBER	NUMBER				IN
							U/M	UNIT
4	1	PAHZZ	5950-00-226-3088	446016	04901	TRANSFORMER, POWER	EA	1
4	2	XDHZZ		SCRBHBR8-32X5-16	04901	SCREW, MACHINE	EA	4
4	3	XDHZZ		840110	04901	WASHER, FLAT	EA	4
4	4	PAHZZ	5310-00-019-0670	1908-00	78189	WASHER, LOCK	EA	4
4	5	XDHZZ		NUTBR8-32X5-16	04901	NUT, PLAIN, HEXAGON	EA	4
4	6	PAHZZ	5910-00-227-0729	FP376-5	37942	CAPACITOR, FIXED, ELECTROLYTIC	EA	1
4	7	PAHZZ	5910-00-170-5193	WP200	37942	CAPACITOR, FIXED, ELECTROLYTIC	EA	1
4	8	XDHZZ		730235	04901	BRACKET, ANGLE	EA	1
4	9	XDHZZ		SCRRHBR6-32X1-4	04901	SCREW, MACHINE	EA	20
4	10	PAHZZ	5310-00-754-4399	1906-00	78189	WASHER, LOCK	EA	2
4	11	XDHZZ		NUTBR6-32X1-4	04901	NUT, PLAIN, HEXAGON	EA	2
4	12	XDHZZ		SR5P	28520	BUSHING, STRAIN RELIEF, CABLE	EA	1
4	13	PAHZZ	5935-00-062-6621	53C13244	71785	SOCKET, ELECTRON TUBE	EA	2
4	14	XDHZZ		SCRBHBR4-40X14-4	04901	SCREW, MACHINE	EA	6
4	15	XDHZZ	5310-00-939-1061	MS35333-104	96906	WASHER, LOCK	EA	6
4	16	XDHZZ		541	79963	TERMINAL, LUG	EA	4
4	17	PAHZZ	5960-00-272-9182	6X4	58854	ELECTRON TUBE	EA	1
4	18	XDHZZ		843010	04901	WASHER, LOCK	EA	8
4	19	XDHZZ		745100	04901	NUT, PLAIN, PLATE	EA	4
4	20	PAHZZ	5960-00-503-4880	0A2	81349	ELECTRON TUBE	EA	1
4	21	XDHZZ		601136	04901	CHASSIS, ELECTRICAL EQUIPMENT	EA	1
4	22	PAOZZ	6625-00-970-6414	310-1	76493	ADAPTER, CONNECTOR	EA	1
4	23	PAHZZ	6625-00-970-6414	568101	04901	CONNECTOR, PLUG, ELECTRICAL	EA	1
4	24	PAHZZ	5325-00-286-2580	1042	72653	GROMMET, RUBBER	EA	1

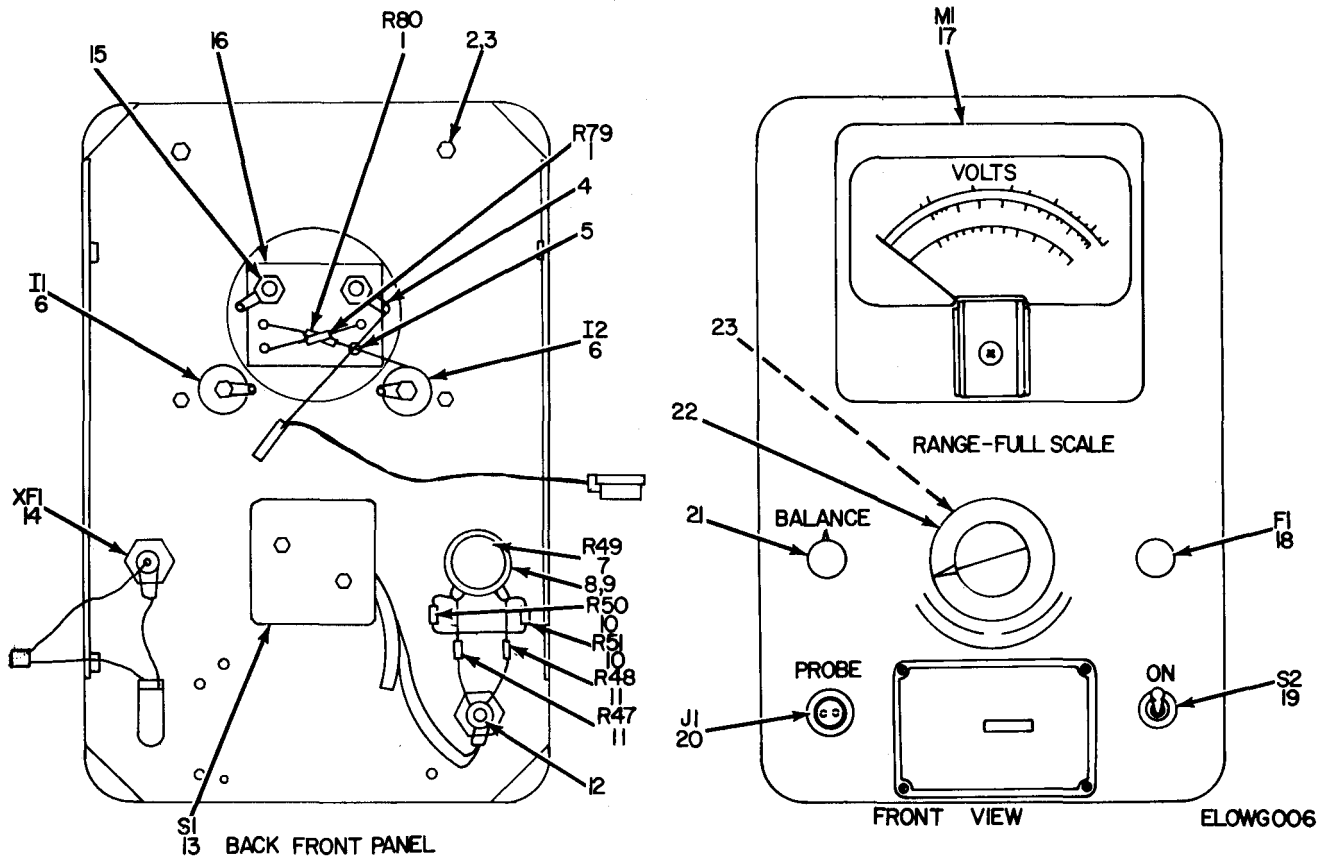


Figure 5. Voltmeter, Electronic ME-247/U or ME-247A/U, Panel Assembly.



SECTION II								(7)	(8)
(1)	(2)	(3)	(4)	(5)	(6)			(7)	(8)
ILLUSTRATION									
(A)	(B)								QTY
FIG	ITEM	SMR	NATIONAL	PART	DESCRIPTION				INC
NO.	NO.	CODE	STOCK	NUMBER	FSCM	USABLE ON CODE	U/M	UNIT	IN
			NUMBER	NUMBER					
5	1	PAHZZ	5905-00-190-8883	RC20GF100J	81349	RESISTOR, FIXED, COMPOSITION	EA	2	
5	2	XDHZZ		843010	04901	WASHER, LOCK	EA	4	
5	3	XDHZZ		NUTBR6-32X1-4	04901	NUT, PLAIN, HEXAGON	EA	4	
5	4	XDHZZ		1467AP27	71785	TERMINAL, LUG	EA	2	
5	5	XDHZZ		1724-3	71279	TERMINAL, STUD	EA	4	
5	6	PAOZZ	6240-00-155-8706	47	08806	LAMP, INCANDESCENT	EA	2	
5	7	XDHZZ		JA4N648S503UC	01121	RESISTOR, VARIABLE	EA	1	
5	8	XDHZZ		840124	04901	WASHER, FLAT	EA	1	
5	9	PAHZZ	5940-00-581-3600	334	79963	TERMINAL, LUG	EA	1	
5	10	XDHZZ		EB8225	01121	RESISTOR, FIXED, COMPOSITION	EA	2	
5	11	PAHZZ	5905-00-246-9396	RCR20G226JS	81349	RESISTOR, FIXED, COMPOSITION	EA	2	
5	12	XDHZZ		840132	04901	WASHER, FLAT	EA	1	
5	13	PAHZZ	5930-00-970-1239	466145	04901	SWITCH, ROTARY	EA	1	
5	14	PAHZZ	5920-00-892-9311	HKP	71400	FUSEHOLDER	EA	1	
5	15	XDHZZ		745141	04901	NUT, PLAIN, HEXAGON	EA	2	
5	16	XDHZZ		486107	04901	TERMINAL BOARD	EA	1	
5	17	PAHZZ	6625-00-983-8794	554139	04901	AMMETER	EA	1	
5	18	PAOZZ	5920-00-199-9498	MDL1-2	71400	FUSE, CARTRIDGE	EA	1	
5	19	PAHZZ	5930-00-892-9064	110-63	73559	SWITCH, TOGGLE	EA	1	
5	20	PAHZZ	5935-00-546-7500	80PC2FT	02660	CONNECTOR, RECEPTACLE, ELECTRICAL	EA	1	
5	21	PAOZZ	5355-00-160-7108	1400	72512	KNOB	EA	1	
5	22	PAOZZ	5355-00-160-7108	HK3	80053	KNOB	EA	1	
5	23	XDHHH		091314	04901	SWITCH ASSEMBLY	EA	1	

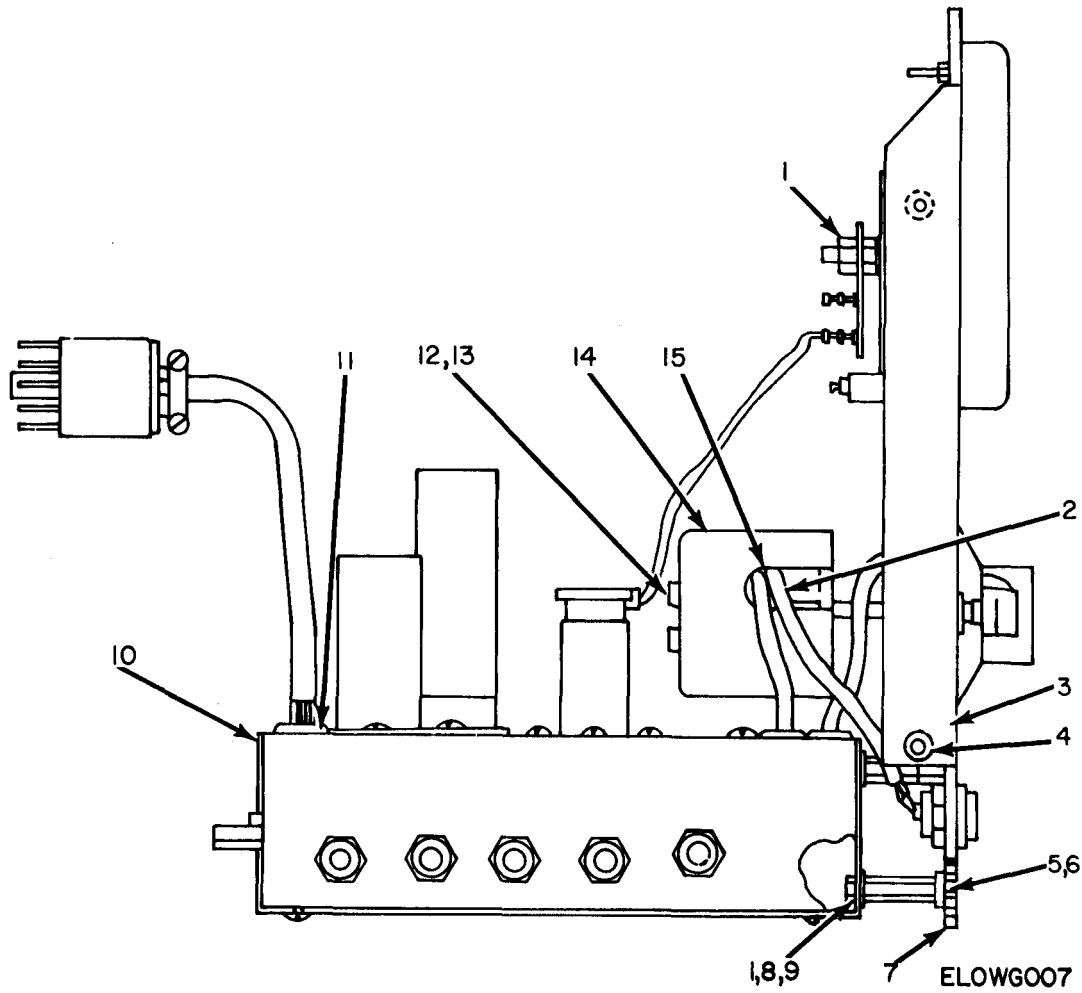


Figure 6. Voltmeter, Electronic ME-247/U or ME-247A/U, Panel Assembly, Right Side View.

(1) ILLUSTRATION		(2)	(3)	(4)	(5)	(6)	(7)	(8)
(a) FIG NO.	(b) ITEM NO.	SMR CODE	NATIONAL STOCK NUMBER	PART NUMBER	FSCM	DESCRIPTION	USABLE ON CODE	QTY INC IN UNIT
6	1	XDHZZ	5310-00-261-6192	4008-14-00	78189	WASHER, LOCK		EA 8
6	2	XDHZZ		570123	04901	CABLE SUBASSEMBLY, SWITCH		EA 1
6	3	XDHZZ		602365-1	04901	PANEL, FRONT		EA 1
6	4	XDHZZ		SCRBHBR8-32X3-8	04901	SCREW, MACHINE		EA 4
6	5	XDHZZ		SCRBHBR6-32X3-8	04901	SCREW, MACHINE		EA 2
6	6	XDHZZ		843021	04901	WASHER, LOCK		EA 4
6	7	XDHZZ		602364	04901	PANEL		EA 1
6	8	XDHZZ		793126	04901	SCREW, MACHINE		EA 4
6	9	PAHZZ	5310-00-062-6106	8219B832	06540	NUT, PLAIN, SLEEVE		EA 4
6	10	XDHHH		001304	04901	AMPLIFIER ASSEMBLY		EA 1
6	11	XDHZZ		1043-1	72653	GROMMET, RUBBER		EA 1
6	12	XDHZZ		SCRFBBR8-32X3-8	04901	SCREW, MACHINE		EA 4
6	13	XDHZZ		9630BA0632	06540	NUT, PLAIN, CLINCH		EA 2
6	14	XDHZZ		700210	04901	COVER, ELECTRONIC SWITCH		EA 1
6	15	XDHZZ		1043	72653	GROMMET, RUBBER		EA 1



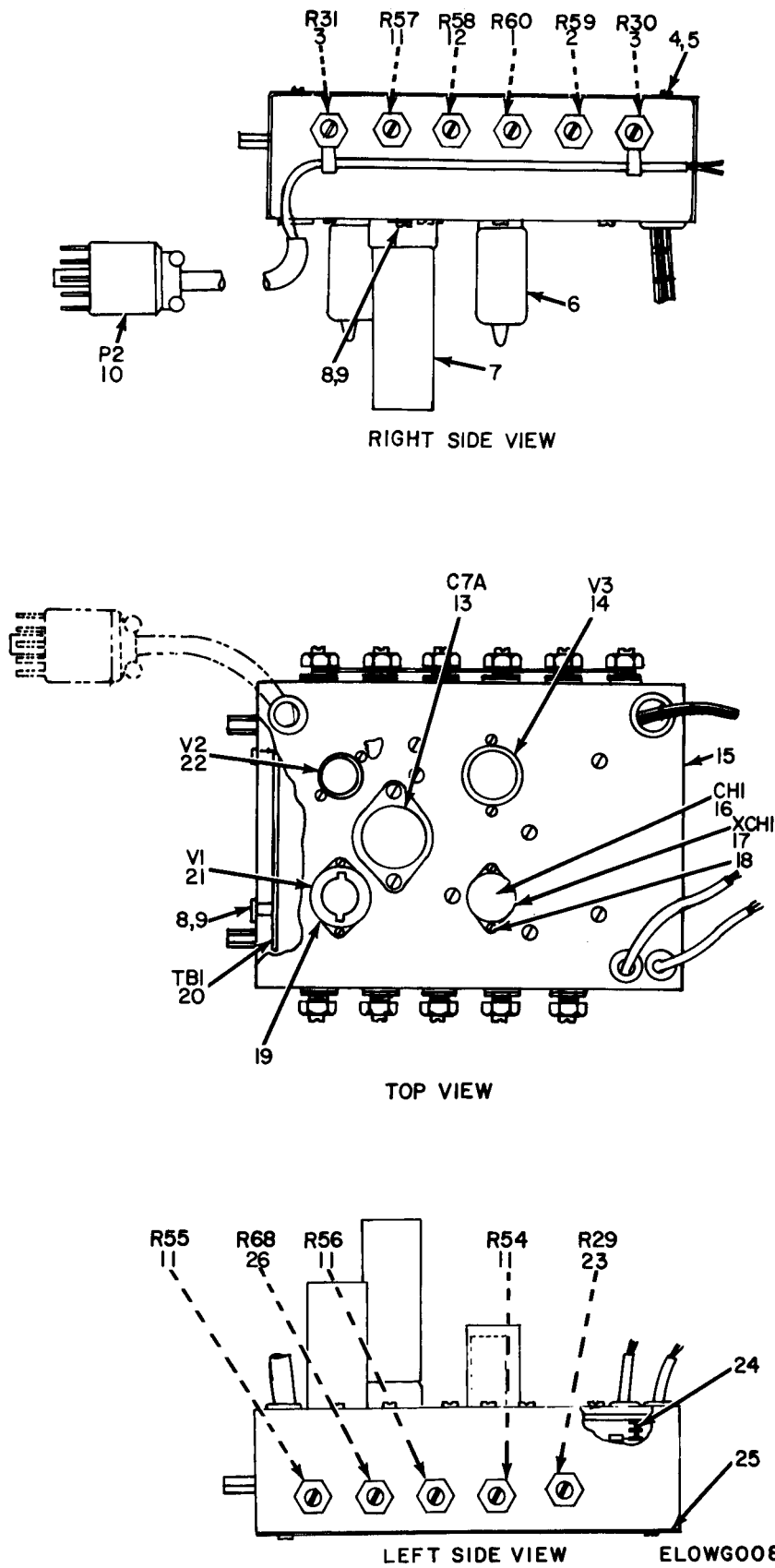
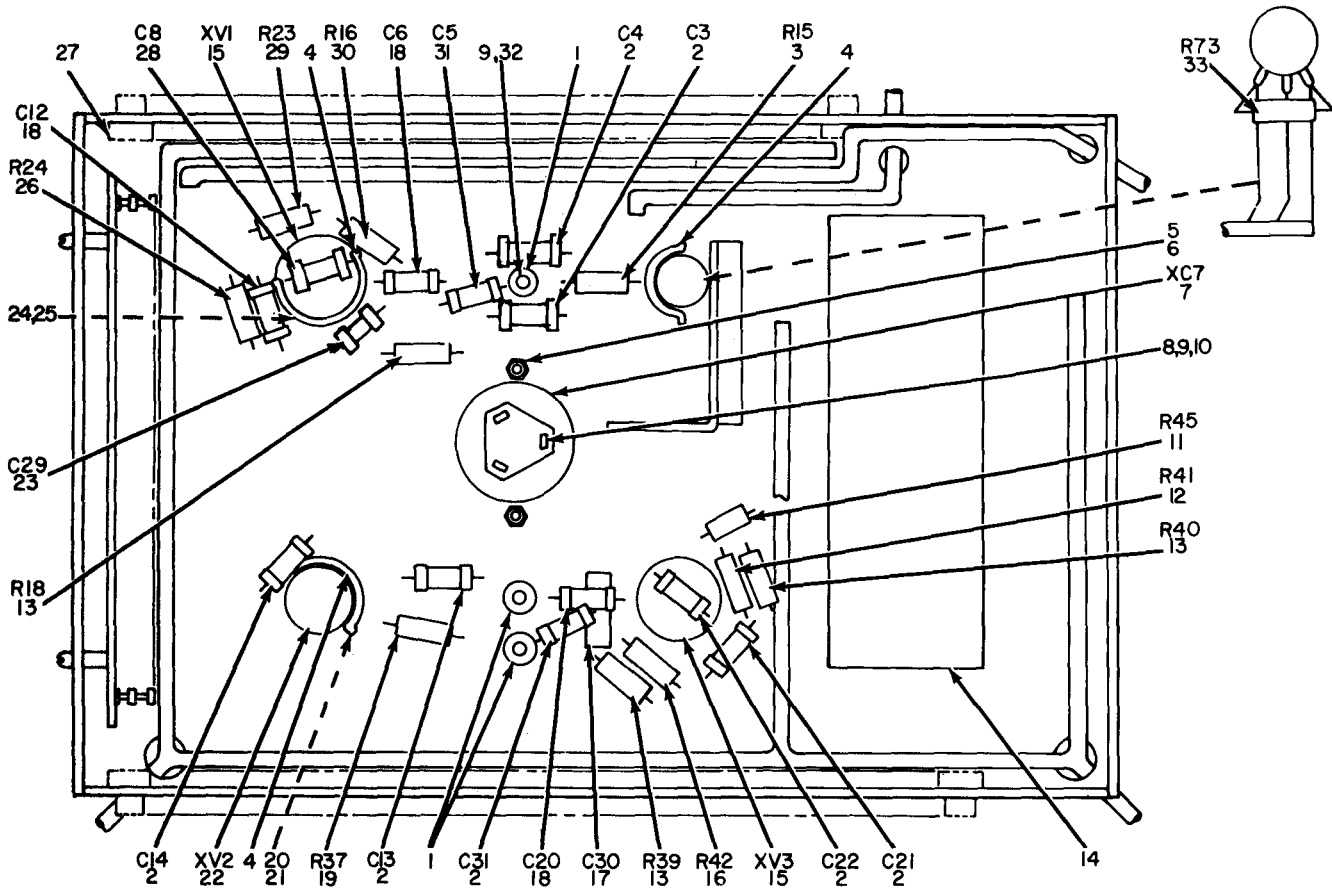


Figure 7. Voltmeter, Electronic ME-247/U or ME-247A/U, Amplifier Assembly.

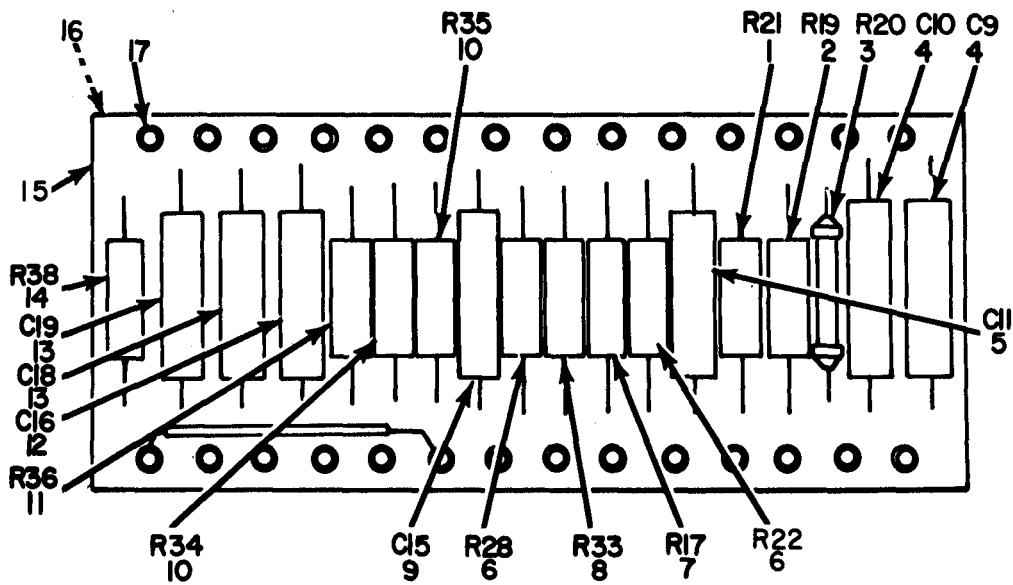
SECTION II								
(1)	(2)	(3)	(4)	(5)	(6)	(7)	(8)	
ILLUSTRATION								
(A)	(B)						QTY	
FIG	ITEM	SMR	NATIONAL	PART	DESCRIPTION		INC	
NO.	NO.	CODE	STOCK	NUMBER	FSCM	USABLE ON CODE	IN	
			NUMBER				UNIT	
7	1	XDHZZ		34-5203B	10582	RESISTOR, VARIABLE	EA	1
7	2	XDHZZ		34-0756A	10582	RESISTOR, VARIABLE	EA	1
7	3	XDHZZ		34-5204A	10582	RESISTOR, VARIABLE	EA	2
7	4	XDHZZ		NUTBR4-40X1-4	04901	NUT, PLAIN, HEXAGON	EA	2
7	5	XDHZZ	5310-00-939-1061	MS35333-104	96906	WASHER, LOCK	EA	1
7	6	PAHZZ	5960-00-264-3004	TS103U02	81394	SHIELD, ELECTRON TUBE	EA	1
7	7	XDHZZ		730139	04901	SHIELD, ELCTRON TUBE SOCKET	EA	1
7	8	PAHZZ	5310-00-754-4399	1906-00	78189	WASHER, LOCK	EA	12
7	9	XDHZZ		SCRBHBR6-32X5-16	04901	SCREW, MACHINE	EA	10
7	10	PAHZZ	5935-00-257-7799	86FM11-11	02660	CONNECTOR, PLUG, ELECTRICAL	EA	1
7	11	XDHZZ		34-5202A	10582	RESISTOR, VARIABLE	EA	4
7	12	PAHZZ	5905-00-062-6603	34-5188	10582	RESISTOR, VARIABLE	EA	1
7	13	PAHZZ	5910-00-726-3372	FP230	37942	CAPACITOR, FIXED, ELECTROLYTIC	EA	1
7	14	PAHZZ	5960-00-545-5435	7199	49671	ELECTRON TUBE	EA	1
7	15	XDHZZ		601115	04901	CHASSIS, ELECTRICAL EQUIPMENT	EA	1
7	16	PAHZZ	5945-00-970-1240	540113	04001	CHOPPER, ELECTRONIC	EA	1
7	17	PAHZZ	5935-00-970-6427	472118	04901	SOCKET, CHOPPER	EA	1
7	18	XDHZZ		SCRBHBR4-40X1-4	04901	SCREW, MACHINE	EA	6
7	19	XDHZZ		402	71785	STRAP NUT, ELECTRON TUBE SOCKET	EA	1
7	20	XDHHH		091312	04901	TERMINAL BOARD ASSEMBLY	EA	1
7	21	PAHZZ	5960-00-166-7664	12AX7	81349	ELECTRON TUBE	EA	1
7	22	PAHZZ	5960-00-813-5008	6A06WB	81349	ELECTRON TUBE	EA	1
7	23	PAHZZ	5905-00-700-0776	JA41040S2202UC	01121	RESISTOR, VARIABLE	EA	1
7	24	PAHZZ	5940-00-155-7688	2106-04-00	78189	TERMINAL, LUG	EA	1
7	25	XDHZZ		602102	04901	PLATE, BOTTOM	EA	1
7	26	XDHZZ		34-7681B	10582	RESISTOR, VARIABLE	EA	1



ELOWG009

Figure 8. Voltmeter, Electronic ME-247/U or ME-247A/U, Amplifier Assembly, Inside View.

SECTION II								
(1)	(2)	(3)	(4)	(5)	(6)	(7)	(8)	
ILLUSTRATION								
(A)	(B)						QTY	
FIG	ITEM	NATIONAL	PART		DESCRIPTION		INC	
NO.	NO.	STOCK	NUMBER	FSCM		USABLE ON CODE	IN	
		NUMBER	NUMBER				UNIT	
8	1	XDHZZ		X947-2	71277	TERMINAL, STUD	EA	3
8	2	PAHZZ	5910-00-797-9742	192P10402	56289	CAPACITOR, FIXED, PAPER	EA	7
8	3	PAHZZ	5905-00-279-1876	RC20GF222J	81349	RESISTOR, FIXED, COMPOSITION	EA	1
8	4	PAHZZ	5960-00-711-6934	95B1	71785	RETAINER, ELECTRON TUBE SHIELD	EA	3
8	5	XDHZZ		541	79963	TERMINAL, LUG	EA	14
8	6	XDHZZ		NUTBR6-32XU-4	04901	NUT, PLAIN, HEXAGON	EA	2
8	7	PAHZZ	5910-00-194-7807	BP4	37942	PLATE, MOUNTING	EA	1
8	8	PAHZZ	5940-00-156-7345	2102-06-00	78189	TERMINAL, LUG	EA	1
8	9	PAHZZ	5310-00-754-4399	1906-00	78189	WASHER, LOCK	EA	7
8	10	XDHZZ		SCRBHBR6-32X5-16	04901	SCREW, MACHINE	EA	4
8	11	PAHZZ	5905-00-192-0651	RC42GF203J	81349	RESISTOR, FIXED, COMPOSITION	EA	1
8	12	PAHZZ	5905-00-192-0667	EB2245	01121	RESISTOR, FIXED, COMPOSITION	EA	1
8	13	PAHZZ	5905-00-192-0390	EB1055	01121	RESISTOR, FIXED, COMPOSITION	EA	3
8	14	XDHHH		091313	04901	TERMINAL BOARD ASSEMBLY	EA	1
8	15	XDHZZ		44C12827	71785	SOCKET, ELECTRON TUBE	EA	2
8	16	PAHZZ	5905-00-190-8880	RC20GF122J	81349	RESISTOR, FIXED, COMPOSITION	EA	1
8	17	PAHZZ	5910-00-893-5180	TE1100	56289	CAPACITOR, FIXED, ELECTROLYTIC	EA	1
8	18	XDHZZ		192P22102	56289	CAPACITOR, FIXED, PAPER	EA	3
8	19	XDHZZ		CD1-2PR576K	06668	RESISTOR, FIXED, FILM	EA	1
8	20	PAHZZ	5935-00-259-9853	14167	71785	STRAP NUT, ELECTRON TUBE SOCKET	EA	2
8	21	XDHZZ		SCRBHBR4-40X1-4	04901	SCREW, MACHINE	EA	2
8	22	PAHZZ	5935-00-062-7774	53C18984	71785	SOCKET, ELECTRON TUBE	EA	1
8	23	PAHZZ	5910-00-071-3046	ET8-05	72982	CAPACITOR, FIXED, CERAMIC	EA	1
8	24	XDHZZ		402	71785	STRAP NUT, ELECTRON TUBE SOCKET	EA	1
8	25	PAHZZ	5940-00-581-3600	334	79963	TERMINAL, LUG	EA	3
8	26	PAHZZ	5905-00-190-8885	RC20GF225J	81349	RESISTOR, FIXED, COMPOSITION	EA	1
8	27	PAHZZ	5325-00-286-2580	1042	72653	GROMMET, RUBBER	EA	1
8	28	PAHZZ	5910-00-944-9486	192P47202	56289	CAPACITOR, FIXED, PAPER	EA	1
8	29	PAHZZ	5905-00-279-3503	RC20GF682J	81349	RESISTOR, FIXED, COMPOSITION	EA	1
8	30	PAHZZ	5905-00-279-1892	RC20GF685J	81349	RESISTOR, FIXED, COMPOSITION	EA	1
8	31	PAHZZ	5910-00-719-4370	192P33202	56289	CAPACITOR, FIXED, PAPER	EA	1
8	32	XDHZZ		SCRBHBR6-32X3-16	04901	SCREW, MACHINE	EA	3
8	33	PAHZZ	5905-00-690-9431	C203-9K5PCT	16299	RESISTOR, FIXED, COMPOSITION	EA	1



ELOWGOIO

Figure 9. Voltmeter, Electronic ME-247/U or ME-247A/U, Terminal Board, Rear Assembly.



SECTION II								(7)	(8)	
(1)	(2)	(3)	(4)	(5)	(6)			(7)	(8)	
ILLUSTRATION										
(A)	(B)								QTY	
FIG	ITEM	SMR	NATIONAL	PART	DESCRIPTION				INC	
NO.	NO.	CODE	STOCK	NUMBER	FSCM	USABLE	ON	CODE	IN	
			NUMBER						UNIT	
9	1	PAHZZ	5905-00-586-9888	CD1-2PR825K	06668				EA	1
9	2	XDHZZ		CD1-2PR845	06668				EA	1
9	3	PAHZZ	5905-00-809-5960	CD1-2PR10K	06668				EA	1
9	4	PAHZZ	5910-00-893-5180	TE1100	56289				EA	2
9	5	PAHZZ	5910-00-797-9742	192P10402	56288				EA	1
9	6	PAHZZ	5905-00-279-2515	RC20GF474J	81349				EA	2
9	7	PAHZZ	5905-00-415-1602	EB4735	01121				EA	1
9	8	PAHZZ	5905-00-192-0390	EB1055	01121				EA	1
9	9	PAHZZ	5910-00-889-4462	192P47392	56289				EA	1
9	10	PAHZZ	5905-00-171-2003	RC20GF204J	81349				EA	2
9	11	PAHZZ	5905-00-279-2514	RC20GF564J	81349				EA	1
9	12	PAHZZ	5910-00-993-1712	192P2292	56289				EA	1
9	13	PAHZZ	5910-00-955-5492	192P33352	56289				EA	2
9	14	PAHZZ	5905-00-192-0649	RC20GF203J	81349				EA	1
9	15	XDHZZ		486155	04901				EA	1
9	16	XDHZZ		1246C3-8	71279				EA	2
9	17	XDHZZ		X2080C	71279				EA	28

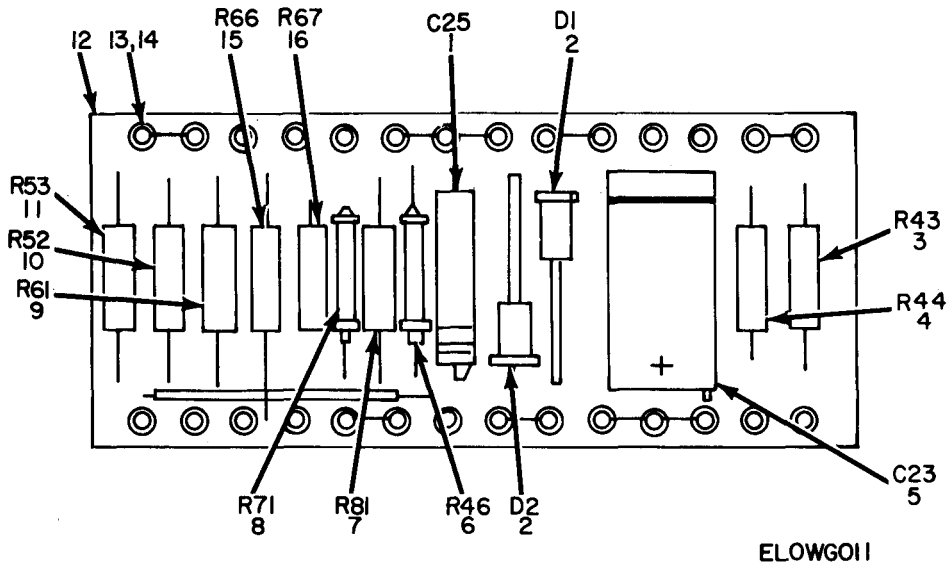
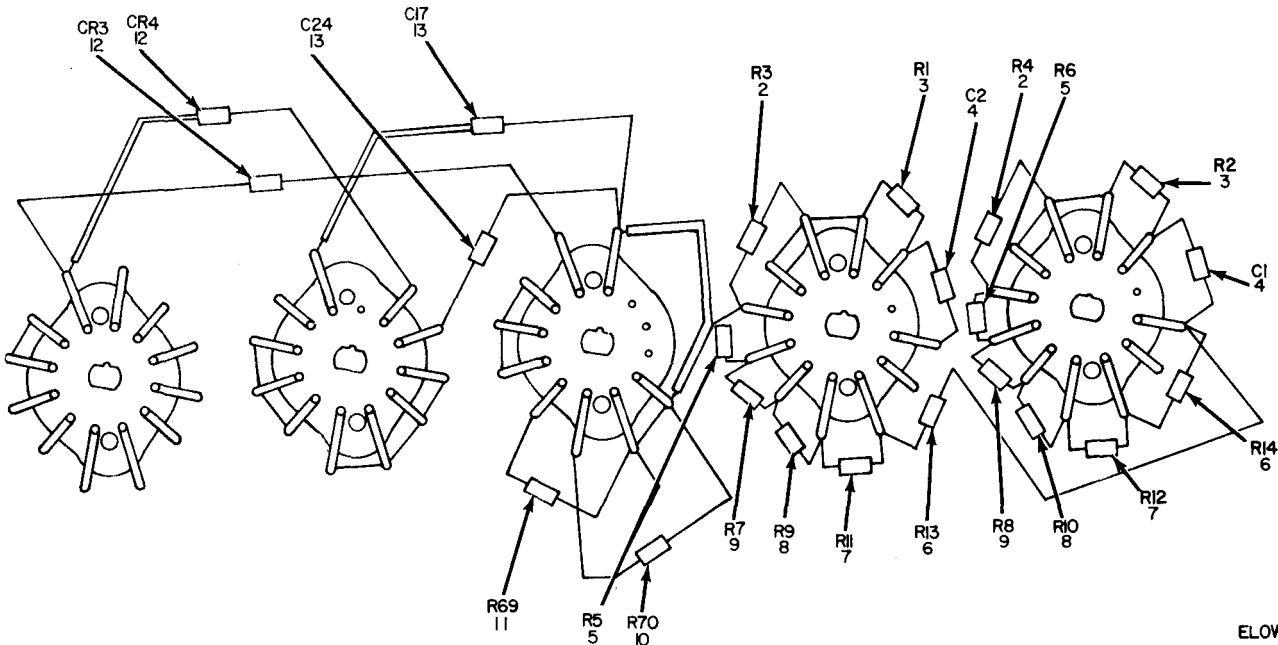
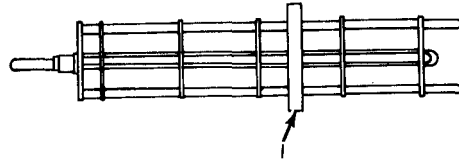


Figure 10. Voltmeter, Electronic ME-247/U or ME-247A/U, Terminal Board, Front Assembly.

SECTION II

(1)	(2)	(3)	(4)	(5)	(6)	(7)	(8)
ILLUSTRATION							
(A)	(B)						QTY
FIG	ITEM	SMR	NATIONAL	PART	DESCRIPTION		INC
NO.	NO.	CODE	STOCK	NUMBER	FSCM	USABLE ON CODE	IN
			NUMBER	NUMBER			UNIT
10	1	PAHZZ	5910-00-081-6159	TE1303	56289	CAPACITOR, FIXED, ELECTROLYTIC	EA 1
10	2	XDHZZ		1N600	99180	SEMICONDUCTOR DEVICE, DIODE	EA 2
10	3	PAHZZ	5905-00-192-0390	EB1055	01121	RESISTOR, FIXED, COMPOSITION	EA 1
10	4	PAHZZ	5905-00-111-8357	RCR20G681JS	81349	RESISTOR, FIXED, COMPOSITION	EA 1
10	5	PAHZZ	5910-00-899-3797	P8292ZN13	00656	CAPACITOR, FIXED, PAPER	EA 1
10	6	PAHZZ	5905-00-587-0242	CD1-2PR30-1K	06668	RESISTOR, FIXED, FILM	EA 1
10	7	PAHZZ	5905-00-195-6761	RC20GF104J	81349	RESISTOR, FIXED, COMPOSITION	EA 1
10	8	XDHZZ		CD1-2PR7-5K	06668	RESISTOR, FIXED, FILM	EA 1
10	9	XDHZZ		EB2215	01121	RESISTOR, FIXED, COMPOSITION	EA 1
10	10	PAHZZ	5905-00-192-0667	EB2245	01121	RESISTOR, FIXED, COMPOSITION	EA 1
10	11	PAHZZ	5905-00-279-1750	EB2405	01121	RESISTOR, FIXED, COMPOSITION	EA 1
10	12	XDHZZ		486155	04901	TERMINAL BOARD	EA 1
10	13	XDHZZ		X2080C	71279	TERMINAL, STUD	EA 28
10	14	XDHZZ		1246C3-8	71279	NUT, PLAIN, CLINCH	EA 2
10	15	PAHZZ	5905-00-802-7499	EB1835	44655	RESISTOR, FIXED, COMPOSITION	EA 1
10	16	PAHZZ	5905-00-909-4234	EB3335	01121	RESISTOR, FIXED, COMPOSITION	EA 1



ELOWG012

Figure 11. Voltmeter, Electronic ME-247/U or ME-247A/U, Switch Assembly.

(1) ILLUSTRATION		(2)	(3)	(4)	(5)	(6)	(7)	(8)
(a) FIG NO.	(b) ITEM NO.	SMR CODE	NATIONAL STOCK NUMBER	PART NUMBER	FSCM	DESCRIPTION	U/M	QTY INC IN UNIT
							<i>USABLE ON CODE</i>	
11	1	XDHZZ		700212	04901	SHIELD, ROTARY SWITCH	EA	1
11	2	PAHZZ	5905-00-059-3690	CD1-2PR5-11M	06668	RESISTOR, FIXED, FILM	EA	2
11	3	PAHZZ	5905-00-279-2519	EB3345	01121	RESISTOR, FIXED, COMPOSITION	EA	2
11	4	PAHZZ	5910-00-797-9742	192P10402	56289	CAPACITOR, FIXED, PAPER	EA	2
11	5	XDHZZ		CD1-2PR4-64K	06668	RESISTOR, FIXED, FILM	EA	2
11	6	XDHZZ		CD1-2PR675	06668	RESISTOR, FIXED, FILM	EA	2
11	7	XDHZZ		CD1-2PR1-39K	06668	RESISTOR, FIXED, FILM	EA	2
11	8	PAHZZ	5905-00-936-1286	CD1-2PR6-81	06668	RESISTOR, FIXED, FILM	EA	2
11	9	XDHZZ		CD1-2PR47-5K	06668	RESISTOR, FIXED, FILM	EA	2
11	10	PAHZZ	5905-00-909-4234	EB3335	01121	RESISTOR, FIXED, COMPOSITION	EA	1
11	11	PAHZZ	5905-00-121-9110	EB5625	01121	RESISTOR, FIXED, COMPOSITION	EA	1
11	12	PAHZZ	5961-00-758-6075	530040	04901	SEMICONDUCTOR DEVICE, DIODE	EA	2
11	13	PAHZZ	5910-00-893-5180	TE1100	56289	CAPACITOR, FIXED, ELECTROLYTIC	EA	2

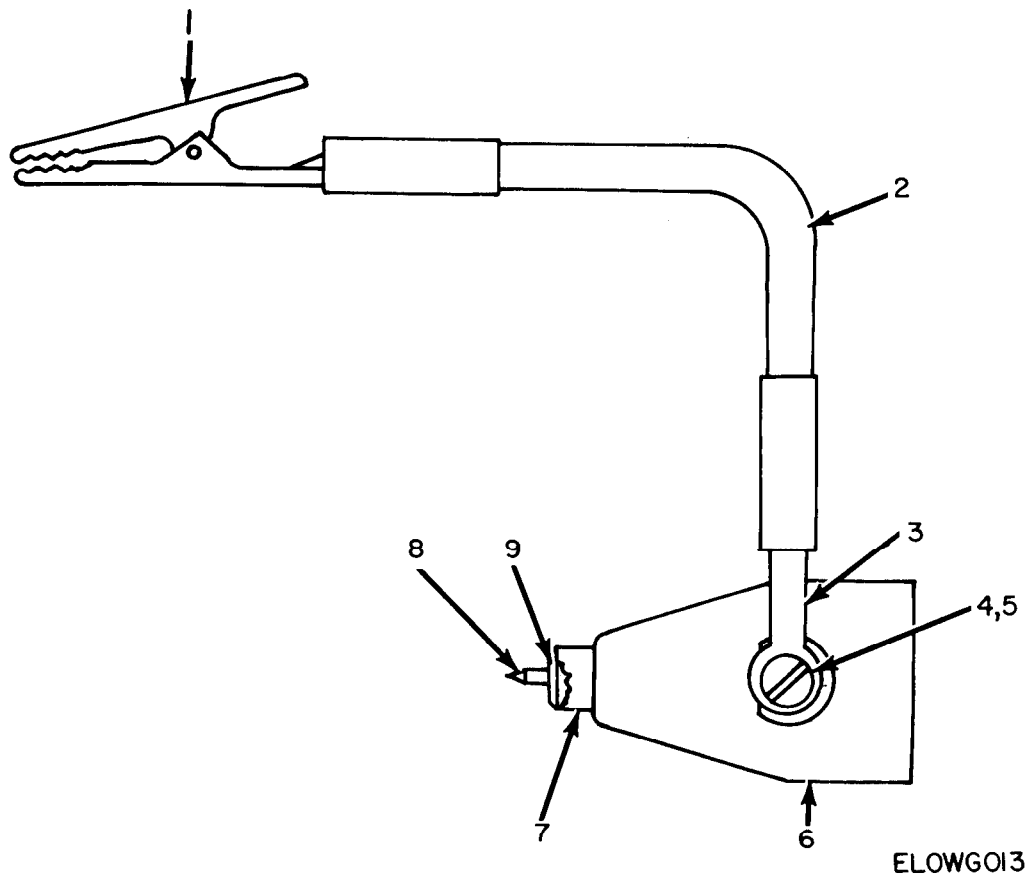
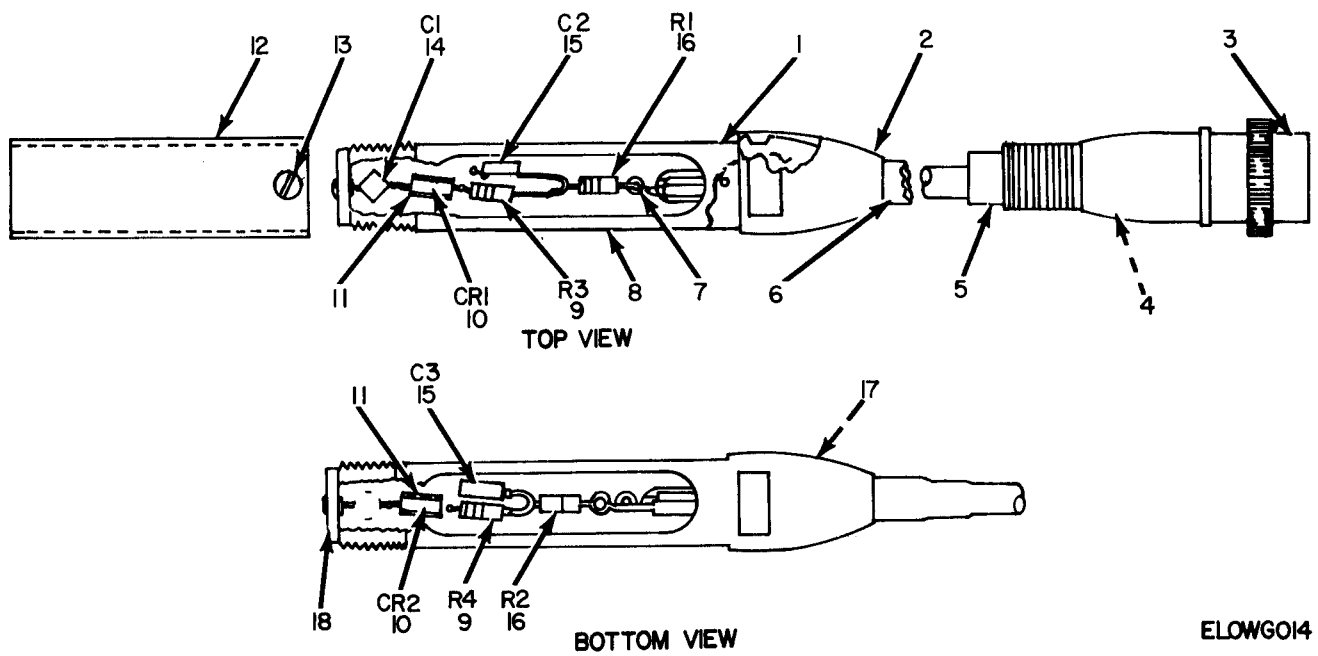


Figure 12. Probe Subassembly MX-4529/U.

(1) ILLUSTRATION		(2)	(3)	(4)	(5)	(6) DESCRIPTION	(7)	(8)
(a) FIG NO.	(b) ITEM NO.	SMR CODE	NATIONAL STOCK NUMBER	PART NUMBER	FSCM	USABLE ON CODE	U/M	QTY INC IN UNIT
						<b>GROUP 03 PROBESUBASSEMBLYMX-4529/U</b>		
12	1	XDHZZ		30	76545	CLIP,ELECTRICAL	EA	1
12	2	XDHZZ		571015	04901	LEAD,ELECTRICAL	EA	1
12	3	XDHZZ		4029	77147	TERMINAL,LUG	EA	1
12	4	XDHZZ		SCRRHBR2-56X3-32	04901	SCREW,MACHINE	EA	1
12	5	PAHZZ	5325-00-576-2154	SE22	61957	EYELET,METALLIC	EA	1
12	6	XDHZZ		771022	04901	HOUSING,TIP	EA	1
12	7	XDHZZ		750138	04901	INSULATOR T IP	EA	1
12	8	XDHZZ		822111	04901	CCNTACT,TIP	EA	1
12	9	XDHZZ		B22108	04901	CONTACT SPRI NG	EA	1



ELOWGO14

Figure 13. Lead, Test MX-4527/U.

SECTION II

(1)	(2)	(3)	(4)	(5)	(6)	(7)	(8)
ILLUSTRATION							
(A)	(B)	NATIONAL			DESCRIPTION		QTY
FIG	ITEM	STOCK	PART				INC
NO.	NO.	NUMBER	NUMBER	FSCM		USABLE ON CODE	IN
							UNIT
GROUP 04 LEAD, TEST MX-4527/U							
13	1	XDHZZ	091218	04901	CABLE SUBASSEMBLY		EA 1
13	2	XDHZZ	091217	04901	HOUSING SUBASSEMBLY		EA 1
13	3	PAHZZ	5935-00-295-3365	80MC2MT	CONNECTOR, PLUG, ELECTRICAL		EA 1
13	4	XDHZZ	Y0C180HYRING	09922	FERRULE, CABLE		EA 1
13	5	XDHZZ	810026	94901	FERRULE, CABLE		EA 1
13	6	XDHZZ	Y1C219HYRING	09922	FERRULE, CABLE		EA 1
13	7	XDHZZ	FTSM59	98291	TERMINAL, STUD		EA 4
13	8	XDHZZ	812026	04901	HOUSING, PROBE		EA 1
13	9	XDHZZ	300999	04901	RESISTOR, FIXED, FILM		EA 2
13	10	PAHZZ	5961-00-927-5387	530034	SEMICONDUCTOR DEVICE, DIODE		EA 2
13	11	XDHZZ	812063	04901	SHIELD, DIODE		EA 2
13	12	XDHZZ	812030	04901	SLEEVE HOUSING		EA 1
13	13	XDHZZ	SCRBHR2-56X1-8	04901	SCREW, MACHINE		EA 1
13	14	XDHZZ	10497	93958	CAPACITOR, FIXED, PLASTIC		EA 1
13	15	PAHZZ	5910-00-777-1830	224115	CAPACITOR, FIXED, PLASTIC		EA 2
13	16	PAHZZ	5905-00-909-3885	CB1035	RESISTOR, FIXED, COMPOSITION		EA 2
13	17	XDHZZ	771010	04901	FERRULE, PROBE		EA 1
13	18	XDHZZ	770123	04901	INSULATOR, DISC		EA 1

SECTION IV

NATIONAL STOCK NUMBER AND PART NUMBER INDEX

NOTE: LATEST NATIONAL STOCK NUMBER AND PART NUMBER ASSIGNMENTS ARE INCLUDED AT END OF INDEX.

STOCK NUMBER	FIGURE NO.	ITEM NO.	STOCK NUMBER	FIGURE NO.	ITEM NO.
5310-00-019-0670	3	14	5325-00-286-2580	8	27
5310-00-019-0670	4	4	5935-00-295-3365	13	1
5905-00-059-3690	11	2	5905-00-415-1602	9	7
5310-00-062-6106	6	9	5960-00-503-4880	4	20
5340-00-062-6115	2	7	5960-00-545-5435	7	14
5905-00-062-6603	7	12	5935-00-546-7500	5	20
5935-00-062-6621	4	13	5310-00-568-7971	3	3
5935-00-062-7774	8	22	5325-00-576-2154	12	5
5910-00-071-3046	8	23	5310-00-579-0150	2	15
6625-00-072-8637	1	5	5940-00-581-3600	5	9
5910-00-081-6159	10	1	5940-00-581-3600	8	25
5905-00-121-9110	11	11	6130-00-583-9090	3	1
5940-00-155-7688	7	23	5905-00-586-9888	9	1
6240-00-155-8706	5	6	5905-00-587-0242	10	6
5940-00-156-7345	8	8	5905-00-690-9431	8	33
5355-00-160-7108	5	21	5905-00-700-0776	7	25
5960-00-166-7664	7	21	5960-00-711-6934	8	4
5910-00-170-5193	4	7	5910-00-719-4370	8	31
5940-00-171-0419	3	15	5910-00-726-3372	7	13
5905-00-171-2003	9	10	5961-00-758-6075	11	12
5905-00-190-8880	8	16	5910-00-777-1830	13	15
5905-00-190-8883	5	1	5910-00-797-9742	8	2
5905-00-190-8885	8	26	5910-00-797-9742	9	5
5905-00-192-0390	8	13	5910-00-797-9742	11	4
5905-00-192-0390	9	8	5905-00-809-5960	9	3
5905-00-192-0390	10	3	5960-00-813-5008	7	22
5905-00-192-0649	9	14	5910-00-840-2403	3	4
5905-00-192-0651	8	11	5910-00-889-4462	9	9
5905-00-192-0667	8	12	5930-00-892-9064	5	19
5905-00-192-0667	10	10	5920-00-892-9311	5	14
5910-00-194-7807	8	7	5910-00-893-5180	9	4
5905-00-195-6761	10	7	5910-00-893-5180	11	13
5920-00-199-9498	5	18	5910-00-899-3797	10	5
5950-00-226-3088	4	1	5905-00-909-3885	13	16
5910-00-227-0729	4	6	5961-00-927-5387	13	10
5905-00-249-4190	3	8	5905-00-929-4911	3	10
5935-00-257-7799	7	10	5905-00-936-1286	11	8
5935-00-259-9853	8	20	5910-00-944-9486	8	28
5310-00-261-6192	6	1	5910-00-955-5492	9	13
5960-00-264-3004	7	6	5930-00-970-1239	5	13
5905-00-279-1750	10	11	5945-00-970-1240	7	16
5905-00-279-1876	8	3	6625-00-970-6414	4	22
5905-00-279-1892	8	30	6625-00-970-6414	4	23
5905-00-279-2514	9	11	5935-00-970-6427	7	17
5905-00-279-2515	9	6	6625-00-973-2296	1	4
5905-00-279-2519	11	3	6625-00-973-2297	1	3
5905-00-279-2617	3	9	5935-00-975-3150	3	18
5905-00-279-3503	8	29	6625-00-983-8794	5	17
5325-00-286-2580	4	24	5910-00-993-1712	9	12

PART NUMBER	FSCM	FIG NO	ITEM NO	PART NUMBER	FSCM
BP4	37942	8	7	EB3335	1121
BP6	37942	3	4	EB3335	1121
B22108	4901	12	9	EB3345	1121
CB1035	1121	13	16	EB4735	1121
CD1-2-2PR47-5K	6668	11	9	EB5625	1121
CD1-2PR1-39K	6668	11	7	EB8225	1121
CD1-2PR10K	6668	9	3	ET8-05	72982
CD1-2PR30-1K	6668	10	6	FP230	37942
CD1-2PR4-64K	6668	11	5	FP376-5	37942
CD1-2PR5-11M	6668	11	2	FTSM59	98291
CD1-2PR576K	6668	8	19	HKP	71400
CD1-2PR6-81	6668	11	8	JA4N648S503UC	1121
CD1-2PR675	6668	11	6	JA41040S2202UC	1121
CD1-2PR7-5K	6668	10	8	MDL1-2	71400
CD1-2PR825K	6668	9	1	ME-247/U	80058
CD1-2PR845	6668	9	2	ME-247A/U	80058
CE9	37942	3	19	MX4527/U	80058
C203-9K5PCT	16299	8	33	MX4528/U	80058
EB1055	1121	8	13	MX4529/U	80058
EB1055	1121	9	8	NUTBR4-40X1-4	4901
EB1055	1121	10	3	NUTBR4-40X1-4	4901
EB1835	44655	10	15	NUTBR6-32XU-4	4901
EB2215	1121	10	9	NUTBR6-32X1-4	4901
EB2245	1121	8	12	NUTBR6-32X1-4	4901
EB2245	1121	10	10	NUTBR6-32X1-4	4911
EB2405	1121	10	11	NUTBR8-32X3-8	4901



NATIONAL STOCK NUMBER AND PART NUMBER INDEX

PART NUMBER	FSCM	FIG. NO.	ITEM NO.	PART NUMBER	FSCM	FIG. NO.	ITEM NO.
NUTBR8-32X5-16	4901	3	12	1806-00	78189	3	3
NUTBR8-32X5-16	4901	4	5	1904-00	78189	4	15
P82922N13	656	10	5	1904-00	78189	7	5
RC20GF100J	81349	5	1	190400	78189	3	6
RC20GF104J	81349	10	7	1906-00	78189	4	10
RC20GF122J	81349	8	16	1906-00	78189	7	8
RC20GF203J	81349	9	14	1906-00	78189	8	9
RC20GF204J	81349	9	10				
RC20GF222J	81349	8	3	1908-00	78189	3	14
RC20GF225J	81349	8	26	1908-00	78189	4	4
				1910-00	78189	2	15
RC20GF474J	81349	9	6	192P10402	56288	9	5
RC20GF564J	81349	9	11	192P10402	56289	8	2
				192P10402	56289	11	4
RC20GF682J	81349	8	29	192P22102	56289	8	18
RC20GF685J	81349	8	30	192P2292	56289	9	12
RC32GF105J	81349	3	9	192P33202	56289	8	31
RC42GF203J	81349	8	11	192P33352	56289	9	13
RC42GF562J	81349	3	8	192P47202	56289	8	28
SCRBHBR2-56X1-8	4901	13	13	192P47392	56289	9	9
SCRBHBR4-40X1-4	4901	3	5	1953-6B	71616	3	20
SCRBHBR4-40X1-4	4901	7	18	2102-06-00	78189	8	8
SCRBHBR4-40X1-4	4901	8	21	2106-04-00	78189	7	23
SCRBHBR4-40X14-4	4901	4	14	2163	83330	3	11
SCRBHBR6-32X1-2	4901	2	10	224115	4901	13	15
SCRBHBR6-32X3-16	4901	8	32	231-1059G3	94144	5	22
SCRBHBR6-32X3-8	4901	6	5	30	76545	12	1
SCRBHBR6-32X5-16	4901	3	21	300999	4901	13	9
SCRBHBR6-32X5-16	4901	7	9	3048B	84970	3	1
SCRBHBR6-32X5-16	4901	8	10	310-1	76493	4	22
SCRBHBR6-32X7-8	4901	3	22	334	79963	5	9
SCRBHBR6-32X9-16	4901	2	8	334	79963	8	25
SCRBHBR8-32X3-8	4901	6	6	34-0756A	10582	7	2
SCRBHBR8-32X5-16	4901	4	2	34-5188	10582	7	12
SCRBHST6-32X3-8	4901	2	11	34-5202A	10582	7	11
SCRBH8-32-21-4	4901	3	13	34-5203B	10582	7	1
SCRFBRR8-32X3-8	4901	6	12	34-5204A	10582	7	3
SCRHBR6-32X1-4	4901	3	16	34-7681B	10582	7	26
SCRHRBR2-56X3-32	4901	12	4	4008-14-00	78189	6	1
SCRHRBR6-32X1-4	4901	4	9	402	71785	7	19
SE22	61957	12	5	402	71785	8	24
SR5P	28520	4	12	4029	77147	12	3
TE1100	56289	8	17	44C12827	71785	8	15
TE1100	56289	9	4	446016	4901	4	1
TE1100	56289	11	13	466145	4901	5	13
TE1303	56289	10	1	47	8806	5	6
TS103U02	81349	7	6	472118	4901	7	17
WP200	37942	4	7	486107	4901	5	16
X2080C	71279	9	17	486155	4901	9	15
X2080C	71279	10	13	486155	4901	10	12
X947-2	71277	8	1	53C13244	71785	4	13
YOC180HYRING	9922	13	4	53C18984	71785	8	22
Y1C219HYRING	9922	13	6	530034	4901	13	10
0A2	81349	4	20	530040	4901	11	12
1304	4901	6	10	540113	4001	7	16
91217	4901	13	2	541	79963	4	16
91218	4901	13	3	541	79963	8	5
91302	4901	1	2	554139	4901	5	17
91312	4901	7	20	568101	4901	4	23
91313	4901	8	14	570123	4901	6	2
91314	4901	5	23	571015	4901	12	2
91315	4901	1	1	6A06WB	81349	7	22
91316	4901	2	12	6X4	58854	4	17
1N600	99180	10	2	600220	4901	2	5
10W10315PCT	2642	3	10	601115	4901	7	15
1042	72653	4	24	601136	4901	4	21
1042	72653	8	27	602102	4901	7	24
1043	72653	6	15	602364	4901	6	7
1043-1	72653	6	11	602365-1	4901	6	3
10497	93958	13	14	700210	4901	6	14
110-63	73559	5	19	700212	4901	11	1
12AX7	81349	7	21	7199	49671	7	14
1246C3-8	71279	9	16	730139	4901	7	7
1246C3-8	71279	10	14	730235	4901	4	8
1334	70485	2	7	745100	4901	4	19
1400	72512	5	21	745141	4901	5	15
14167	71785	8	20	745174	4901	2	9
1467AP27	71785	5	4	750138	4901	12	7
1513A	71785	3	15	750181	4901	2	1
1724-3	71279	5	5	77M1P11	2660	3	18

NATIONAL STOCK NUMBER AND PART NUMBER INDEX

PART NUMBER	FSCM	FIG. NO.	ITEM NO.	PART NUMBER	FSCM	FIG. NO.	ITEM NO.
770123	4901	13	18	812063	4901	13	11
771010	4901	13	17	82198832	6540	6	9
771022	4901	12	6	822111	4901	12	8
780126	4901	2	6	840110	4901	4	3
780130	4901	2	16	840124	4901	5	8
780133	4901	2	2	840132	4901	5	12
793126	4901	6	8	840163	4901	2	13
793143	4901	2	3	843010	4901	4	18
796111	4901	2	4	843010	4901	5	2
80MC2MT	2660	13	1	843021	4901	6	4
80PC2FT	2660	5	20	86PM11-11	2660	7	10
810026	94901	13	5	98B1	71785	8	4
812026	4901	13	8	9630BA0632	6540	6	13
812030	4901	13	12				

LATEST NATIONAL STOCK NUMBER ASSIGNMENTS

STOCK NUMBER	FIG. NO.	ITEM NO.	STOCK NUMBER	FIG. NO.	ITEM NO.
5905-00-111-8357	10	4	5310-00-754-4399	8	9
5905-00-246-9396	5	11	5905-00-802-7499	10	15
5960-00-272-9182	4	17	6625-00-817-8908	1	6
5310-00-634-9784	3	11	5910-00-893-5180	8	17
5310-00-754-4399	4	10	5905-00-909-4234	10	16
5310-00-754-4399	7	8	5905-00-909-4234	11	10

LATEST PART NUMBER ASSIGNMENTS

PART NUMBER	FSCM	FIG. NO.	ITEM NO.
RCR20G226JS	81349	5	11
RCR20G681JS	81349	10	4
1906-00	78189	3	17

ADDITIONAL LATEST NATIONAL STOCK NUMBER ASSIGNMENTS

STOCK NUMBER	FIG. NO.	ITEM NO.
5355-00-160-7108	5	22
5310-00-939-1061	4	15
5310-00-939-1061	7	5

ADDITIONAL LATEST PART NUMBER ASSIGNMENTS

PART NUMBER	FSCM	FIG. NO.	ITEM NO.
HK3	80053	5	22
MS35333-104	96906	4	15
MS35333-104	96906	7	5



**By Order of the Secretary of the Army:**

**BERNARD W. ROGERS**  
*General, United States Army*  
*Chief of Staff*

Official:

**PAUL T. SMITH**  
*Major General, United States Army*  
*The Adjutant General*

DISTRIBUTION:

*Active Army:*

USASA (2)	USARMIS (1)
COE (1)	Instl (2) except
TSG (1)	Fort Gillem (10)
USAARENBD (1)	Fort Gordon (10)
DARCOM (1)	Fort Huachuca (10)
TRADOC (2)	Fort Carson (5)
OS Maj Comd (4)	Ft Richardson (ECOM) (2)
TECOM (2)	LBAD (14)
USACC (4)	SAAD (30)
MDW (1)	TOAD (14)
Armies (2)	SHAD (3)
Corps (2)	Sig FLDMS (1)
HISA (Ft Monmouth) (33)	USAERDAA (1)
SW Colleges (1)	USAERDAW (1)
USASIGS (5)	Unite org under fol TOE:
USAADS (2)	(1 cy each unit)
USAFAS (20)	11-97
USAARMS (20)	11-98
USAIS (2)	11-117
USAES (2)	11-127
USAICS (3)	11-500 (AA-AC)
MAAG (1)	

NG: State AG (3)

USAR: None

For explanation of abbreviations used, see AR 310-50.

RECOMMENDED CHANGES TO EQUIPMENT TECHNICAL MANUALS



**SOMETHING WRONG WITH THIS MANUAL?**

THEN... JOT DOWN THE DOPE ABOUT IT ON THIS FORM, TEAR IT OUT, FOLD IT AND DROP IT IN THE MAIL!

FROM: (YOUR UNIT'S COMPLETE ADDRESS)

Commander  
Stateside Army Depot  
ATTN: AMSTA-US  
Stateside, N.J. 07703

DATE 10 July 1975

PUBLICATION NUMBER

TM 11-5840-340-12

DATE

23 Jan 74

TITLE

Radar Set AN/SPS-76

BE EXACT... PIN-POINT WHERE IT IS

PAGE NO.	PARA-GRAPH	FIGURE NO.	TABLE NO.
----------	------------	------------	-----------

2-25	2-28		
3-10	3-3		3-1
5-6	5-8		

FO3

IN THIS SPACE TELL WHAT IS WRONG AND WHAT SHOULD BE DONE ABOUT IT:

Recommend that the installation antenna alignment procedure be changed throughout to specify a 2° IFF antenna lag rather than 1°.

REASON: Experience has shown that with only a 1° lag, the antenna servo system is too sensitive to wind gusting in excess of 25 knots, and has a tendency to rapidly accelerate and decelerate as it hunts, causing strain to the drive train. Hunting is minimized by adjusting the lag to 2° without degradation of operation.

Item 5, Function column. Change "2 db" to "3db."

REASON: The adjustment procedure for the TRANS POWER FAULT indicator calls for a 3 db (500 watts) adjustment to light the TRANS POWER FAULT indicator.

Add new step f.1 to read, "Replace cover plate removed in step e.1, above."

REASON: To replace the cover plate.

Zone C 3. On J1-2, change "+24 VDC to "+5 VDC."

REASON: This is the output line of the 5 VDC power supply. + 24 VDC is the input voltage.

TYPED NAME, GRADE OR TITLE, AND TELEPHONE NUMBER

SSG I. M. DeSpirito 999-1776

SIGN HERE:

*SSG I. M. DeSpirito*

DA FORM 2028-2 (TEST)

1 AUG 74

P.S.--IF YOUR OUTFIT WANTS TO KNOW ABOUT YOUR MANUAL "FIND," MAKE A CARBON COPY OF THIS AND GIVE IT TO YOUR HEADQUARTERS.

HISA 1686-75

TEAR ALONG DOTTED LINE





# SOMETHING WRONG WITH THIS MANUAL?

THEN... JOT DOWN THE DOPE ABOUT IT ON THIS FORM, TEAR IT OUT, FOLD IT AND DROP IT IN THE MAIL!

FROM: (YOUR UNIT'S COMPLETE ADDRESS)

DATE

PUBLICATION NUMBER

DATE

TITLE

BE EXACT... PIN-POINT WHERE IT IS

IN THIS SPACE TELL WHAT IS WRONG AND WHAT SHOULD BE DONE ABOUT IT:

PAGE NO.	PARA-GRAPH	FIGURE NO.	TABLE NO.

TEAR ALONG DOTTED LINE

TYPED NAME, GRADE OR TITLE, AND TELEPHONE NUMBER

SIGN HERE:

FILL IN YOUR  
UNIT'S ADDRESS

FOLD BACK

DEPARTMENT OF THE ARMY

OFFICIAL BUSINESS  
PENALTY FOR PRIVATE USE, \$300

POSTAGE AND FEES PAID  
DEPARTMENT OF THE ARMY  
DOD-314



Commander  
US Army Electronics Command  
ATTN: DRSEL-MA-Q  
Fort Monmouth, New Jersey 07703

FOLD BACK

TEAR ALONG DOTTED LINE

REVERSE OF DA FORM 2028-2 (TEST)





# SOMETHING WRONG WITH THIS MANUAL?

THEN... JOT DOWN THE DOPE ABOUT IT ON THIS FORM. TEAR IT OUT, FOLD IT AND DROP IT IN THE MAIL!

FROM: (YOUR UNIT'S COMPLETE ADDRESS)

DATE

PUBLICATION NUMBER

DATE

TITLE

BE EXACT... PIN-POINT WHERE IT IS

IN THIS SPACE TELL WHAT IS WRONG AND WHAT SHOULD BE DONE ABOUT IT:

PAGE NO.

PARA-GRAPH

FIGURE NO.

TABLE NO.

TEAR ALONG DOTTED LINE

TYPED NAME, GRADE OR TITLE, AND TELEPHONE NUMBER

SIGN HERE:

FILL IN YOUR  
UNIT'S ADDRESS

FOLD BACK

DEPARTMENT OF THE ARMY

OFFICIAL BUSINESS

PENALTY FOR PRIVATE USE, \$300

POSTAGE AND FEES PAID  
DEPARTMENT OF THE ARMY  
DOD-314



Commander  
US Army Electronics Command  
ATTN: DRSEL-MA-Q  
Fort Monmouth, New Jersey 07703

FOLD BACK

TEAR ALONG DOTTED LINE

RECOMMENDED CHANGES TO EQUIPMENT TECHNICAL MANUALS



# SOMETHING WRONG WITH THIS MANUAL?

THEN... JOT DOWN THE DOPE ABOUT IT ON THIS FORM, TEAR IT OUT, FOLD IT AND DROP IT IN THE MAIL!

FROM: (YOUR UNIT'S COMPLETE ADDRESS)

DATE

PUBLICATION NUMBER

DATE

TITLE

BE EXACT... PIN-POINT WHERE IT IS

IN THIS SPACE TELL WHAT IS WRONG AND WHAT SHOULD BE DONE ABOUT IT:

PAGE NO.	PARA-GRAPH	FIGURE NO.	TABLE NO.
----------	------------	------------	-----------

TEAR ALONG DOTTED LINE

TYPED NAME, GRADE OR TITLE, AND TELEPHONE NUMBER

SIGN HERE:

DA FORM 1 AUG 74 2028-2 (TEST)

P.S.--IF YOUR OUTFIT WANTS TO KNOW ABOUT YOUR MANUAL "FIND," MAKE A CARBON COPY OF THIS AND GIVE IT TO YOUR HEADQUARTERS.

FILL IN YOUR  
UNIT'S ADDRESS

FOLD BACK

DEPARTMENT OF THE ARMY

OFFICIAL BUSINESS

PENALTY FOR PRIVATE USE, \$300

POSTAGE AND FEES PAID  
DEPARTMENT OF THE ARMY  
DOD-314



Commander  
US Army Electronics Command  
ATTN: DRSEL-MA-Q  
Fort Monmouth, New Jersey 07703

FOLD BACK

TEAR ALONG DOTTED LINE

REVERSE OF DA FORM 2028-2 (TEST)

# THE METRIC SYSTEM AND EQUIVALENTS

## WEIGHT MEASURE

1 Centimeter = 10 Millimeters = 0.01 Meters = 0.3937 Inches  
 1 Meter = 100 Centimeters = 1000 Millimeters = 39.37 Inches  
 1 Kilometer = 1000 Meters = 0.621 Miles

## WEIGHTS

1 Gram = 0.001 Kilograms = 1000 Milligrams = 0.035 Ounces  
 1 Kilogram = 1000 Grams = 2.2 lb.  
 1 Metric Ton = 1000 Kilograms = 1 Megagram = 1.1 Short Tons

## LIQUID MEASURE

1 Milliliter = 0.001 Liters = 0.0338 Fluid Ounces  
 1 Liter = 1000 Milliliters = 33.82 Fluid Ounces

## SQUARE MEASURE

1 Sq. Centimeter = 100 Sq. Millimeters = 0.155 Sq. Inches  
 1 Sq. Meter = 10,000 Sq. Centimeters = 10.76 Sq. Feet  
 1 Sq. Kilometer = 1,000,000 Sq. Meters = 0.386 Sq. Miles

## CUBIC MEASURE

1 Cu. Centimeter = 1000 Cu. Millimeters = 0.06 Cu. Inches  
 1 Cu. Meter = 1,000,000 Cu. Centimeters = 35.31 Cu. Feet

## TEMPERATURE

$5/9(^{\circ}\text{F} - 32) = ^{\circ}\text{C}$   
 212° Fahrenheit is equivalent to 100° Celsius  
 90° Fahrenheit is equivalent to 32.2° Celsius  
 32° Fahrenheit is equivalent to 0° Celsius  
 $9/5^{\circ}\text{C} + 32 = ^{\circ}\text{F}$

## APPROXIMATE CONVERSION FACTORS

TO CHANGE	TO	MULTIPLY BY
Inches	Centimeters	2.540
Feet	Meters	0.305
Yards	Meters	0.914
Miles	Kilometers	1.609
Square Inches	Square Centimeters	6.451
Square Feet	Square Meters	0.093
Square Yards	Square Meters	0.836
Square Miles	Square Kilometers	2.590
Acres	Square Hectometers	0.405
Cubic Feet	Cubic Meters	0.028
Cubic Yards	Cubic Meters	0.765
Fluid Ounces	Milliliters	29.573
its	Liters	0.473
arts	Liters	0.946
allons	Liters	3.785
Ounces	Grams	28.349
Pounds	Kilograms	0.454
Short Tons	Metric Tons	0.907
Pound-Feet	Newton-Meters	1.356
Pounds per Square Inch	Kilopascals	6.895
Miles per Gallon	Kilometers per Liter	0.425
Miles per Hour	Kilometers per Hour	1.609

TO CHANGE	TO	MULTIPLY BY
Centimeters	Inches	0.394
Meters	Feet	3.280
Meters	Yards	1.094
Kilometers	Miles	0.621
Square Centimeters	Square Inches	0.155
Square Meters	Square Feet	10.764
Square Meters	Square Yards	1.196
Square Kilometers	Square Miles	0.386
Square Hectometers	Acres	2.471
Cubic Meters	Cubic Feet	35.315
Cubic Meters	Cubic Yards	1.308
Milliliters	Fluid Ounces	0.034
Liters	Pints	2.113
Liters	Quarts	1.057
ers	Gallons	0.264
ms	Ounces	0.035
ograms	Pounds	2.205
Metric Tons	Short Tons	1.102
Newton-Meters	Pounds-Feet	0.738
Kilopascals	Pounds per Square Inch	0.145
ometers per Liter	Miles per Gallon	2.354
ometers per Hour	Miles per Hour	0.621



